

# Snowcem

## P A I N T S

Saurashtra Cement Limited (Paint Division)

### TECHNICAL DATA SHEET ALL PRODUCTS



Lead, Mercury and Chromium Free Paints



Member of Indian Green Building Council



Economy to Ultra-luxurious Products



Pan India Network

‘**Snowcem**’ brand has been acquired by **The Mehta Group’s ‘Saurashtra Cement Limited’**. The Mehta Group runs diversified businesses across the world in various categories like cement, building materials, engineering, horticulture, sports & entertainment, financial and consultancy services to name a few. Saurashtra Cement Limited is a cement business company, that markets the renowned brand ‘Hathi Cement’ in Gujarat and nearby areas. With the acquisition of Snowcem, the company has explored its wings in the paint industry with an enthusiastic approach.

Our founder, Mr. Nanji Kalidas Mehta, left his native land at age 13 in a country vessel bound for Africa. He carried with him a spirit of adventure, determination to succeed and little more than his dreams. The year was 1900 and the unit of currency used to trade with the local tribes was Cowrie Shells.

The Mehta Group sprung from these dramatic yet humble origins. Today, the Mehta Group controls assets of more than US \$500 million and has over 15,000 employees worldwide. It is a multinational, multi-activity enterprise with a global presence spanning 3 continents: Asia, USA and Africa.

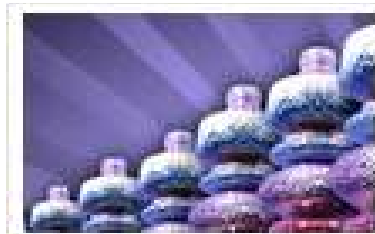
\*To Know more about The Mehta Group:

[https://www.mehtagroup.com/about\\_mehta\\_group.html#](https://www.mehtagroup.com/about_mehta_group.html#)

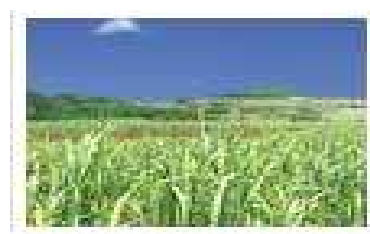
**Our Businesses:**



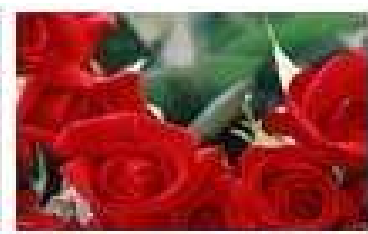
Cement & Building Materials



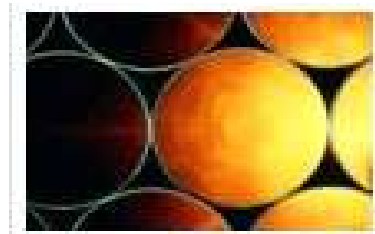
Rigid Packaging



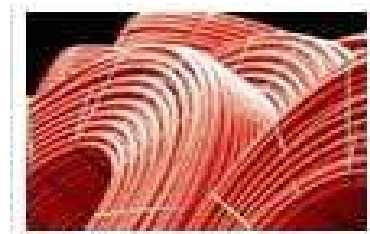
Sugar



Horticulture & Floriculture



Engineering



Electric Cables



Financial Services



Sports & Entertainment



Food Service Products

## **ABOUT SNOWCEM PAINTS**

### **A Brand with a History**

The Internationally acclaimed Snowcem brand was born in UK and dates back to 1950's. With exceptional performance over time, Snowcem has today become a generic name for Exterior and Interior Paints. We design our paints to be longer lasting, so that you reduce the maintenance cycle costs, season after season. With over 6+ decades of existence, Snowcem has gone on to become the preferred choice for consumers and painters. Thanks to its emphasis on high quality and service, today the brand stands tall as a pioneer in its category as it looks to further build on its proud heritage.

### **Changing Tastes for Changing Times**

As Years have passed and tastes in home decor have evolved. Minimalistic designs and hues came and soon gave way to the new fad, contemporary styles, and shapes. At Snowcem, we understand these changing demands and aim to meet them through constant innovations and research.

### **An Entire Range of Solutions**

At Snowcem, we are committed to providing 360 degree range of services. Be it value added technical services such as inspection of buildings, finalizing color schemes, application of samples at sites, suggesting and costing of paint combination to suit your budget

At Snowcem, we are constantly identifying new areas of growth and their changing requirements and desires. This is why we are committed to fulfilling these needs with a constantly evolving product portfolio and an increased rate of production to keep speed with growth.

### **Eco Friendly Commitment:**

All Snowcem Paints and products are Lead, Mercury and Chromium free. Our Evergreen commitment rests on continuous research and development seeking new and breakthrough technologies and superior raw materials. Our products range from economic to ultra luxury durable performance oriented paints which meet stringent international norms for Green coatings.

**Strong Focus on R & D Initiatives & Quality Standards**

**Quality Adherence**

- Attention to quality at every stage of raw materials procurement, including supplier shortlisting, vendor selection & sample testing on receipt of the raw materials at factory.
- Finished goods samples are tested for each batch & kept on record
- Following specifications are checked:  
Specific gravity, viscosity, appearance, coverage are measured. Stability, reactivity & pH are also checked.
- Our paints & products are lead, chromium & mercury free - historically have been a green company.
- Complete ETP (Effluent Treatment Plant) established at factory & working.



**Indian Green Building Council  
MEMBER**



## Product Range



### EXTERIOR EMULSION

LUXURY EMULSION

PREMIUM EMULSION

MIDRANGE EMULSION



### INTERIOR EMULSION

LUXURY EMULSION

PREMIUM EMULSION

MIDRANGE EMULSION



### PRIMERS

### BASECOAT

### TEXTURED WALL FINISH



### WATERPROOF CEMENT PAINTS

### PUTTY

### SNOWCARE RANGE





# Snowcem

## P A I N T S

# UNI-GLOSSS

## ULTIMATE SURFACE PROTECTION

### EXTERIOR EMULSION PAINT

### PRODUCT DESCRIPTION

Uni-glosss Exterior Emulsion Paint, a solar reflective premium quality multi surface paint system is specially formulated to protect substrate from external factors like UV radiation, high humidity, rain and industrial pollution. Its unique formulation gives a glossy finish and very good flexibility. Uni-glosss can be used as an alternate for enamels and can be used for interiors also.

Uni-glosss: contains micronised minerals and extremely stable fine quality pigments which render a smooth glossy finish, retains gloss for long period, is based on special acrylic binder which ensures excellent adhesion to concrete/cement - sand rendering, wood and metal, contains special additive which protects the paint film against algae and fungi, forms highly flexible paint film, is extremely stable against ultra-violet reaction / radiations, provides excellent alkali resistance.

### SURFACE PREPARATION

#### PLASTER

New masonry surfaces must be allowed to cure completely. Recommended curing time is 28 days minimum. A coat of Snowcem Special CW Primer is recommended for best performance.

#### WOOD

Ensure the surface is clean and smooth. Visible cracks, irregularities and undulations shall be rectified appropriately. Apply one coat of CW primer as an undercoat.

#### METAL

Surface must be free from oil, grease and dirt. Use emery paper 180 to sand the surface. Wipe clean and apply one coat of Snowcem Red Oxide primer as an undercoat which is must.

#### CLEANING

Surface should be free from any loose paint, dust or grease. Growth of fungus, algae or moss should be removed by wire brushing and water. For old, friable and difficult masonry surface: A coat of **Snowsol stabilising solution** is recommended. For detailed information please refer **Snowcem Special (CW) Primer / Snowsol** Technical literatures.

#### FILLING THE CRACKS, HOLES & DENTS

For filling cracks upto 3mm, holes and dents use **Snowcare Wall Putty** or white cement and fine sand in the ratio 1:3

For exterior surfaces or substrates that are subjected to continuous seepage or dampness, kindly get the repairs done before the application of paint.



### PAINT APPLICATION PROCESS

APPLICATION	RECOATING PERIOD
STEP 1 <b>SNOWCARE WALL PUTTY</b> (OPTIONAL) TROWEL	O/N
STEP 2 <b>SNOWCEM SPECIAL CW PRIMER</b> BRUSH / ROLLER / SPRAY	4 hrs
STEP 3 <b>UNI-GLOSSS EXTERIOR EMULSION PAINT</b> BRUSH / ROLLER / SPRAY	4 - 6 hrs
STEP 4 <b>UNI-GLOSSS EXTERIOR EMULSION PAINT</b> BRUSH / ROLLER / SPRAY	4 - 6 hrs

1. Recoat period is quoted for 25°C and 50% Relative Humidity, these may vary under different atmospheric conditions.
2. Some shades may require 3 coats for proper hiding.

**HORIZONTAL SURFACES LIKE TOP OF WINDOWS, LEDGES SHOULD BE PAINTED WITH 3 COATS OF UNI-GLOSSS FOR GREATER PROTECTION**

**APPLICATION OF PRIMER IS MANDATORY**

### PRODUCT FEATURES

*Unique Formulation*

*High Gloss Finish*

*Solar Reflective Paint System*

*Ecofriendly Alternate For Enamels*

*11 Years Warranty*

### COLOURS AVAILABLE

**1500+\***

\*Currently available in more than 1500 shades as per the Snowcem Paints Colour.



### MIXING RATIO

- Mix water 3:1 by volume for first coat
- Mix water 4:1 by volume for second coat.
- Mix water 10% by volume for wood and metal.



### COVERAGE

Coverage is 140-180 sq. ft per liter per coat. Actual coverage may vary according to the porosity and texture of the surface. For metal surfaces coverage may be higher than the above. For abundant precaution, an initial trial may be undertaken to determine covering capacity on very rough or abnormal surfaces.



### AVAILABLE PACK SIZES

The pack sizes available for **Uni-glosss** are 20 ℓ, 10 ℓ, 4 ℓ and 1ℓ.





## UNI-GLOSSS

ULTIMATE SURFACE PROTECTION

### EXTERIOR EMULSION PAINT

#### TECHNICAL DETAILS

<b>Nature</b>	Thixotropic
<b>Base</b>	Special acrylic binder
<b>Finish</b>	Glossy smooth finish
<b>Drying time</b>	20 - 25 minutes for touch dry
<b>Shelf life</b>	3 years
<b>DFT</b>	50 - 60 microns (2 Coats)

#### HANDLING & STORAGE

Keep containers airtight during handling and storage to avoid loss of material. Store Uni-glosss in a cool dry place and also protect it from extreme climatic conditions during storage, in transit and at site.

#### PRECAUTIONS

It is not advisable to use any waterproofing chemical as base coat, top coat or as an additive. Over dilution of Uni-glosss may result in shade variation, poor hiding, poor bonding or flaking, Excessive brushing and stretching are also to be avoided. No thinner or universal stainer is to be used with Uni-glosss Exterior Emulsion Paint.

#### SAFETY MEASURES

Kindly refer to the MSDS for Uni-glosss Exterior Emulsion Paint which gives detailed information on safety measures while handling the paint, which is available on request.

Store the container with the lid tightly closed in an upright position, in a cool, dry place.

Keep out of reach of children and away from eatables.

May be harmful if swallowed. In case of ingestion, seek immediate medical attention. In case of skin contact immediately wash skin with soap and plenty of water. Get medical attention if irritation develops or persists.

Wear eye protection during application. In case of contact with eyes, rinse immediately with plenty of water and seek medical advice. Do not breathe vapour or spray. It is recommended to wear suitable nose pad during sanding and surface preparation to avoid dust inhalation.

Do not pour leftover paint down the drain or in water courses.

In the event of spills, contain spillage using sand or earth.

#### POST PAINTING CARE

For the best performance of the paint, ensure proper washing and cleaning at regular intervals of six months.

#### GREEN BUILDING PARAMETERS

Uni-glosss qualifies for "GREEN BUILDING CRITERIA"

##### REFERENCE

Type of Paint	LEEDS*	TERI GRIHA*
Exterior Flat	100 g/l VOC	100 g/l VOC
Interior Flat	50 g/l VOC	50 g/l VOC

As per IS 15489 : 2004, Section 6.12.2.1 specifies the "product not to contain more than 5%, by mass, Volatile Organic Compounds"

\* LEED - Leadership in Environment and Energy Design, USA.  
# TERI - The Energy and Resource Institute, India.  
GRIHA - Green Rating Integrated Habitat Assessment.

#### VOLATILE ORGANIC COMPOUNDS

**UNI-GLOSSS EXTERIOR EMULSION PAINT** contains less than 40 g/l VOC

**UNI-GLOSSS EXTERIOR EMULSION PAINT** contains 1-3% VOC.



#### HEAVY METALS

**UNI-GLOSSS EXTERIOR EMULSION PAINT** is free from lead, chromium (VI), cadmium, mercury and its compounds.



#### HAZARDOUS CHEMICALS

**UNI-GLOSSS EXTERIOR EMULSION PAINT** does not contain harmful compounds like formaldehyde, phenolic compounds, benzene, etc.





## SANDTEX MATT

SUPERIOR TEXTURED FINISH

### EXTERIOR EMULSION PAINT

#### PRODUCT DESCRIPTION

Sandtex Matt Exterior Emulsion Paint is specially formulated for exteriors to protect substrate from external factors like UV radiation, high humidity, coastal environment, rain and industrial pollution. Its unique formulation gives a matt finish and a good film thickness.

#### SURFACE PREPARATION

##### PLASTER

New masonry surfaces must be allowed to cure completely. Recommended curing time is 28 days minimum. A base coat of similar shade of Snowcem Plus Waterproof Cement Paint for economic and better finish before application of Sandtex Matt can also be done. Though a coat of Snowcem Special CW Primer is recommended for best performance.

##### CLEANING

Surface should be free from any loose paint, dust or grease. Growth of fungus, algae or moss should be removed by wire brushing and water. For old, friable and difficult surface: A coat of **Snowsol stabilising solution** is recommended. For detailed information please refer **Snowcem Special (CW) Primer / Snowsol** Technical literatures.

##### FILLING THE CRACKS, HOLES & DENTS

For filling cracks upto 3mm, holes and dents use **Snowcare Wall Putty** or white cement and fine sand in the ratio 1:3

For exterior surfaces or substrates that are subjected to continuous seepage or dampness, kindly get the repairs done before the application of paint.



#### PAINT APPLICATION PROCESS

APPLICATION	RECOATING PERIOD
STEP 1 <b>SNOWCARE WALL PUTTY</b> (OPTIONAL) TROWEL	O/N
STEP 2 <b>SNOWCEM SPECIAL CW PRIMER</b> BRUSH / ROLLER / SPRAY	4 hrs
STEP 3 <b>SANDTEX MATT EXTERIOR EMULSION PAINT</b> BRUSH / ROLLER / SPRAY	4 - 6 hrs
STEP 4 <b>SANDTEX MATT EXTERIOR EMULSION PAINT</b> BRUSH / ROLLER / SPRAY	4 - 6 hrs

1. Recoat period is quoted for 25°C and 50% Relative Humidity, these may vary under different atmospheric conditions.
2. Some shades may require 3 coats for proper hiding.

HORIZONTAL SURFACES LIKE TOP OF WINDOWS, EDGES SHOULD BE PAINTED WITH 3 COATS OF SANDTEX MATT FOR GREATER PROTECTION

APPLICATION OF PRIMER IS MANDATORY

#### PRODUCT FEATURES

*Bridges Hairline Cracks*

*Coating With Extra Thickness*

*Protective And Decorative*

*Anti-Algal & Anti-Fungal*

*9 Years Warranty*

#### COLOURS AVAILABLE

**1500+\***

\*Currently available in more than 1500 shades as per the Snowcem Paints Colour Spectra.



#### MIXING RATIO

Mix 4 Parts of **Sandtex Matt Exterior Emulsion Paint** with 1 part of clean potable water by volume for easy brushability.



#### COVERAGE

Coverage 90-100 Sq. ft. per litre per coat. Actual coverage may vary according to the porosity and texture of the surface. For abundant precaution, an initial trial may be undertaken to determine covering capacity on very rough or abnormal surfaces.



#### AVAILABLE PACK SIZES

The pack sizes available for **Sandtex Matt Exterior Emulsion Paint** are 20 l, 10 l, 4 l, and 1 l.







## SANDTEX MATT

SUPERIOR TEXTURED FINISH

### EXTERIOR EMULSION PAINT

#### TECHNICAL DETAILS

Nature	Thixotropic
Base	Special acrylic co-polymer
Finish	Fine textured finish
Drying time	30 - 35 minutes for touch dry
Shelf life	3 years
DFT	90 - 120 microns (2 Coats)

#### HANDLING & STORAGE

Keep containers airtight during handling and storage to avoid loss of material. Store Sandtex Matt in a cool dry place and also protect it from extreme climatic conditions during storage, in transit and at site.

#### PRECAUTIONS

It is not advisable to use any waterproofing chemical as base coat, top coat or as an additive. Over dilution of Sandtex Matt may result in shade variation, poor hiding, poor bonding or flaking, Excessive brushing and stretching are also to be avoided. No thinner or universal stainer is to be used with Sandtex Matt Exterior Emulsion Paint.

#### SAFETY MEASURES

Kindly refer to the MSDS for Sandtex Matt Exterior Emulsion Paint which gives detailed information on safety measures while handling the paint, which is available on request.

Store the container with the lid tightly closed in an upright position, in a cool, dry place.

Keep out of reach of children and away from eatables.

May be harmful if swallowed. In case of ingestion, seek immediate medical attention. In case of skin contact immediately wash skin with soap and plenty of water. Get medical attention if irritation develops or persists.

Wear eye protection during application. In case of contact with eyes, rinse immediately with plenty of water and seek medical advice. Do not breathe vapour or spray. It is recommended to wear suitable nose pad during sanding and surface preparation to avoid dust inhalation.

Do not pour leftover paint down the drain or in water courses.

In the event of spills, contain spillage using sand or earth.

#### POST PAINTING CARE

For the best performance of the paint, ensure proper washing and cleaning at regular intervals of six months.

#### GREEN BUILDING PARAMETERS

Sandtex Matt qualifies for "GREEN BUILDING CRITERIA"

##### REFERENCE

Type of Paint	LEEDS*	TERI GRIHA*
Exterior Flat	100 g/l VOC	100 g/l VOC
Interior Flat	50 g/l VOC	50 g/l VOC

As per IS 15489 : 2004, Section 6.12.2.1 specifies the "product not to contain more than 5%, by mass, Volatile Organic Compounds"

\* LEED - Leadership in Environment and Energy Design, USA.  
# TERI - The Energy and Resource Institute, India.  
GRIHA - Green Rating Integrated Habitat Assessment.

##### VOLATILE ORGANIC COMPOUNDS

**Sandtex Matt Exterior Emulsion Paint** contains less than 40 g/l VOC

**Sandtex Matt Exterior Emulsion Paint** contains 1-3% VOC.



##### HEAVY METALS

**Sandtex Matt Exterior Emulsion Paint** is free from lead, chromium (VI), cadmium, mercury and its compounds.



##### HAZARDOUS CHEMICALS

**Sandtex Matt Exterior Emulsion Paint** does not contain harmful compounds like formaldehyde, phenolic compounds, benzene, etc.





## PENTASIA

5 in 1 Premium Emulsion with Silicon

### EXTERIOR EMULSION PAINT

#### PRODUCT DESCRIPTION

Pentasia Exterior Emulsion Paint is a specially formulated premium acrylic paint for exteriors with silicon enhanced, using pure acrylic resin and additives which allow it to last for years even when exposed to adverse atmospheric conditions in industrialised areas and coastal cities.

The ingredients of Pentasia consists of premium quality pure acrylic emulsion, silicon additive, quality micronised pigments, extenders and other additives to enhance drying and flow properties.

Pentasia also contains special additives to prevent algal, fungal and bacterial growth, UV degradation and provides excellent alkali resistance.

Pentasia can be used for Interiors also.

#### SURFACE PREPARATION

##### PLASTER

New masonry surfaces must be allowed to cure completely. Recommended curing time is 28 days minimum. A coat of Snowcem Special CW Primer is recommended for best performance.



##### CLEANING

Surface should be free from any loose paint, dust or grease. Growth of fungus, algae or moss should be removed by wire brushing and water. For old, friable and difficult surface: A coat of **Snowsol stabilising solution** is recommended. For detailed information please refer **Snowcem Special (CW) Primer / Snowsol** Technical literatures.



##### FILLING THE CRACKS, HOLES & DENTS

For filling cracks upto 3mm, holes and dents use **Snowcare Wall Putty** or white cement and fine sand in the ratio 1:3



For exterior surfaces or substrates that are subjected to continuous seepage or dampness, kindly get the repairs done before the application of paint.

#### PAINT APPLICATION PROCESS

APPLICATION	RECOATING PERIOD
STEP 1 SNOWCARE WALL PUTTY (OPTIONAL) TROWEL	O/N
STEP 2 SNOWCEM SPECIAL CW PRIMER BRUSH / ROLLER / SPRAY	4 hrs
STEP 3 PENTASIA EXTERIOR EMULSION PAINT BRUSH / ROLLER / SPRAY	4 - 6 hrs
STEP 4 PENTASIA EXTERIOR EMULSION PAINT BRUSH / ROLLER / SPRAY	4 - 6 hrs

1. Recoat period is quoted for 25°C and 50% Relative Humidity, these may vary under different atmospheric conditions.
2. Some shades may require 3 coats for proper hiding.

HORIZONTAL SURFACES LIKE TOP OF WINDOWS, EDGES SHOULD BE PAINTED WITH 3 COATS OF PENTASIA FOR GREATER PROTECTION

APPLICATION OF PRIMER IS MANDATORY

#### PRODUCT FEATURES

**Dirt Pick Up Resistant**

**Water Repellent**

**Exceptional UV Resistance**

**Anti Algal - Anti Fungal**

**Silicon Enhanced**

**9 Years Warranty**

#### COLOURS AVAILABLE

**1500+\***

\*Currently available in more than 1500 shades as per the Snowcem Paints Colour Spectra.



#### MIXING RATIO

Mix 3 Parts of **Pentasia Exterior Emulsion Paint** with 1 part of clean potable water by volume for easy brushability.



#### COVERAGE

Coverage 120-160 Sq. ft. per liter per coat. Actual coverage may vary according to the porosity and texture of the surface. For abundant precaution, an initial trial may be undertaken to determine covering capacity on very rough or abnormal surfaces.



#### AVAILABLE PACK SIZES

The pack sizes available for **Pentasia Exterior Emulsion Paint** are 20 L., 10 L., 4 L. and 1 L.





## PENTASIA

5 in 1 Premium Emulsion with Silicon

### EXTERIOR EMULSION PAINT

#### TECHNICAL DETAILS

<b>Nature</b>	Thixotropic
<b>Base</b>	High quality pure acrylic resin and other additives
<b>Finish</b>	Excellent smooth finish
<b>Drying time</b>	20 - 25 minutes for touch dry
<b>Shelf life</b>	3 years
<b>DFT</b>	50 - 60 microns (2 Coats)

#### HANDLING & STORAGE

Keep containers airtight during handling and storage to avoid loss of material. Store Pentasia in a cool dry place and also protect it from extreme climatic conditions during storage, in transit and at site.

#### PRECAUTIONS

It is not advisable to use any waterproofing chemical as base coat, top coat or as an additive. Over dilution of Pentasia may result in shade variation, poor hiding, poor bonding or flaking, Excessive brushing and stretching are also to be avoided. No thinner or universal stainer is to be used with Pentasia Exterior Emulsion Paint.

#### SAFETY MEASURES

Kindly refer to the MSDS for Pentasia Exterior Emulsion Paint which gives detailed information on safety measures while handling the paint, which is available on request.

Store the container with the lid tightly closed in an upright position, in a cool, dry place.

Keep out of reach of children and away from eatables.

May be harmful if swallowed. In case of ingestion, seek immediate medical attention. In case of skin contact immediately wash skin with soap and plenty of water. Get medical attention if irritation develops or persists.

Wear eye protection during application. In case of contact with eyes, rinse immediately with plenty of water and seek medical advice. Do not breathe vapour or spray. It is recommended to wear suitable nose pad during sanding and surface preparation to avoid dust inhalation.

Do not pour leftover paint down the drain or in water courses.

In the event of spills, contain spillage using sand or earth.

#### POST PAINTING CARE

For the best performance of the paint, ensure proper washing and cleaning at regular intervals of six months.

#### GREEN BUILDING PARAMETERS

Pentasia qualifies for "GREEN BUILDING CRITERIA"

##### REFERENCE

Type of Paint	LEEDS*	TERI GRIHA*
Exterior Flat	100 g/l VOC	100 g/l VOC
Interior Flat	50 g/l VOC	50 g/l VOC

As per IS 15489 : 2004, Section 6.12.2.1 specifies the "product not to contain more than 5%, by mass, Volatile Organic Compounds"

\* LEED - Leadership in Environment and Energy Design, USA.  
# TERI - The Energy and Resource Institute, India.  
GRIHA - Green Rating Integrated Habitat Assessment.

#### VOLATILE ORGANIC COMPOUNDS

**Pentasia Exterior Emulsion Paint**

contains less than 40 g/l VOC

**Pentasia Exterior Emulsion Paint** contains 1-3% VOC.



#### HEAVY METALS

**Pentasia Exterior Emulsion Paint** is free from lead, chromium (VI), cadmium, mercury and its compounds.



#### HAZARDOUS CHEMICALS

**Pentasia Exterior Emulsion Paint** does not contain harmful compounds like formaldehyde, phenolic compounds, benzene, etc.





## SNOWCRYL SUPER ACRYLIC WEATHERPROOF EMULSION EXTERIOR EMULSION PAINT

### PRODUCT DESCRIPTION

Snowcryl Exterior Emulsion Paint is a specially formulated premium acrylic paint with 100% pure acrylic binder for exterior surface with silicon.

Snowcryl contains micronised minerals and extremely stable fine quality pigments which render a durable finish. It also contains special additives to prevent algal and fungal growth. Snowcryl is also effective against UV degradation and provides excellent alkali resistance.

Snowcryl is also a silicon based paint, which gives a lotus effect after painting.

### SURFACE PREPARATION

#### PLASTER

New masonry surfaces must be allowed to cure completely. Recommended curing time is 28 days minimum. A coat of Snowcem Special CW Primer is recommended for best performance.



#### CLEANING

Surface should be free from any loose paint, dust or grease. Growth of fungus, algae or moss should be removed by wire brushing and water. For old, friable and difficult surface: A coat of **Snowsol stabilising solution** is recommended. For detailed information please refer **Snowcem Special (CW) Primer / Snowsol** Technical literatures.



#### FILLING THE CRACKS, HOLES & DENTS

For filling cracks upto 3mm, holes and dents use **Snowcare Wall Putty** or white cement and fine sand in the ratio 1:3

For exterior surfaces or substrates that are subjected to continuous seepage or dampness, kindly get the repairs done before the application of paint.



### PAINT APPLICATION PROCESS

APPLICATION	RECOATING PERIOD
STEP 1 SNOWCARE WALL PUTTY (OPTIONAL) TROWEL	O/N
STEP 2 SNOWCEM SPECIAL CW PRIMER BRUSH / ROLLER / SPRAY	4 hrs
STEP 3 SNOWCRYL EXTERIOR EMULSION PAINT BRUSH / ROLLER / SPRAY	4 - 6 hrs
STEP 4 SNOWCRYL EXTERIOR EMULSION PAINT BRUSH / ROLLER / SPRAY	4 - 6 hrs

1. Recoat period is quoted for 25°C and 50% Relative Humidity, these may vary under different atmospheric conditions.
2. Some shades may require 3 coats for proper hiding.

**HORIZONTAL SURFACES LIKE TOP OF WINDOWS, EDGES SHOULD BE PAINTED WITH 3 COATS OF SNOWCRYL FOR GREATER PROTECTION**

**APPLICATION OF PRIMER IS MANDATORY**

### PRODUCT FEATURES

**Added Silicon**

**100% Acrylic Emulsion**

**Superior Color Retention**

**Anti-Algal/Anti Fungal**

**Strong UV Resistance**

**6 Years Warranty**

### COLOURS AVAILABLE

**1500+\***

\*Currently available in more than 1500 shades as per the Snowcem Paints Colour Spectra.



### MIXING RATIO

Mix 2.5 Parts of **SNOWCRYL EXTERIOR EMULSION PAINT** with 1 part of clean potable water by volume for better brushability.



### COVERAGE

Coverage is 120-160 Sq. ft. per liter per coat. Actual coverage may vary according to the porosity and texture of the surface. For abundant precaution, an initial trial may be undertaken to determine covering capacity on very rough or abnormal surfaces.



### AVAILABLE PACK SIZES

The pack sizes available for **SNOWCRYL EXTERIOR EMULSION PAINT** are 20, 10, 4 and 1L.





## SNOWCRYL

SUPER ACRYLIC WEATHERPROOF EMULSION

### EXTERIOR EMULSION PAINT

#### TECHNICAL DETAILS

Nature	Thixotropic
Base	High quality pure acrylic resin and other additives
Finish	Rich smooth finish
Drying time	1 hour
Shelf life	3 years
DFT	50 - 60 microns (2 Coats)

#### HANDLING & STORAGE

Keep containers airtight during handling and storage to avoid loss of material. Store Snowcryl in a cool dry place and also protect it from extreme climatic conditions during storage, in transit and at site.

#### PRECAUTIONS

It is not advisable to use any waterproofing chemical as base coat, top coat or as an additive. Over dilution of Snowcryl may result in shade variation, poor hiding, poor bonding or flaking, Excessive brushing and stretching are also to be avoided. No thinner or universal stainer is to be used with Snowcryl Exterior Emulsion Paint.

#### SAFETY MEASURES

Kindly refer to the MSDS for Snowcryl Exterior Emulsion Paint which gives detailed information on safety measures while handling the paint, which is available on request.

Store the container with the lid tightly closed in an upright position, in a cool, dry place.

Keep out of reach of children and away from eatables.

May be harmful if swallowed. In case of ingestion, seek immediate medical attention. In case of skin contact immediately wash skin with soap and plenty of water. Get medical attention if irritation develops or persists.

Wear eye protection during application. In case of contact with eyes, rinse immediately with plenty of water and seek medical advice. Do not breathe vapour or spray. It is recommended to wear suitable nose pad during sanding and surface preparation to avoid dust inhalation.

Do not pour leftover paint down the drain or in water courses.

In the event of spills, contain spillage using sand or earth.

#### POST PAINTING CARE

For the best performance of the paint, ensure proper washing and cleaning at regular intervals of six months.

#### GREEN BUILDING PARAMETERS

Snowcryl qualifies for "GREEN BUILDING CRITERIA"

##### REFERENCE

Type of Paint	LEEDS*	TERI GRIHA*
Exterior Flat	100 g/l VOC	100 g/l VOC
Interior Flat	50 g/l VOC	50 g/l VOC

As per IS 15489 : 2004, Section 6.12.2.1 specifies the "product not to contain more than 5%, by mass, Volatile Organic Compounds"

\* LEED - Leadership in Environment and Energy Design, USA.  
# TERI - The Energy and Resource Institute, India.  
GRIHA - Green Rating Integrated Habitat Assessment.

#### VOLATILE ORGANIC COMPOUNDS

SNOWCRYL EXTERIOR EMULSION PAINT contains less than 40 g/l VOC

SNOWCRYL EXTERIOR EMULSION PAINT contains 1-3% VOC.



#### HEAVY METALS

SNOWCRYL EXTERIOR EMULSION PAINT is free from lead, chromium (VI), cadmium, mercury and its compounds.



#### HAZARDOUS CHEMICALS

SNOWCRYL EXTERIOR EMULSION PAINT does not contain harmful compounds like formaldehyde, phenolic compounds, benzene, etc.





## TRUMP

HIGH COVERAGE EXTERIOR EMULSION

### EXTERIOR EMULSION PAINT

#### PRODUCT DESCRIPTION

Trump Exterior Emulsion Paint is a convenient choice for users of acrylic emulsion paint, which provides protection with decoration. Trump can be used for interiors also.

Trump Exterior Emulsion Paint: provides quality with economy, fade resistant, contains special biocides which protect the paint film against algae and fungi, superior spreadability, good resistance to ultra-violet radiation, provides good alkali resistance, forms film which is permeable to vapour/air and impermeable to rain water, durable protection.

#### SURFACE PREPARATION

##### PLASTER

New masonry surfaces must be allowed to cure completely. Recommended curing time is 28 days minimum. A coat of Snowcem Special CW Primer is recommended for best performance.



##### CLEANING

Surface should be free from any loose paint, dust or grease. Growth of fungus, algae or moss should be removed by wire brushing and water. For old, friable and difficult surface: A coat of **Snowsol stabilising solution** is recommended. For detailed information please refer **Snowcem Special (CW) Primer / Snowsol** Technical literatures.



##### FILLING THE CRACKS, HOLES & DENTS

For filling cracks upto 3mm, holes and dents use **Snowcare Wall Putty** or white cement and fine sand in the ratio 1:3



For exterior surfaces or substrates that are subjected to continuous seepage or dampness, kindly get the repairs done before the application of paint.

#### PAINT APPLICATION PROCESS

APPLICATION	RECOATING PERIOD
STEP 1 <b>SNOWCARE WALL PUTTY</b> (OPTIONAL) TROWEL	O/N
STEP 2 <b>SNOWCEM SPECIAL CW PRIMER</b> BRUSH / ROLLER / SPRAY	4 hrs
STEP 3 <b>TRUMP EXTERIOR EMULSION PAINT</b> BRUSH / ROLLER / SPRAY	4 - 6 hrs
STEP 4 <b>TRUMP EXTERIOR EMULSION PAINT</b> BRUSH / ROLLER / SPRAY	4 - 6 hrs

1. Recoat period is quoted for 25°C and 50% Relative Humidity, these may vary under different atmospheric conditions.
2. Some shades may require 3 coats for proper hiding.

**HORIZONTAL SURFACES LIKE TOP OF WINDOWS, LEDGES SHOULD BE PAINTED WITH 3 COATS OF TRUMP FOR GREATER PROTECTION**

**APPLICATION OF PRIMER IS MANDATORY**

#### PRODUCT FEATURES

*High Opacity*

*Acrylic Paint System*

*Matt Finish*

*Anti-Algal / Anti-Fungal*

*4 Years Warranty*

#### COLOURS AVAILABLE

**1500+\***

\*Currently available in more than 1500 shades as per the Snowcem Paints Colour.



#### MIXING RATIO

Mix 2 Parts of **Trump Exterior Emulsion Paint** with 1 part of clean potable water by volume for better brushability.



#### COVERAGE

Coverage 110-150 Sq. ft. per liter per coat. Actual coverage may vary according to the porosity and texture of the surface. For abundant precaution, an initial trial may be undertaken to determine covering capacity on very rough or abnormal surfaces.



#### AVAILABLE PACK SIZES

The pack sizes available for **Trump Exterior Emulsion Paint** are 20ℓ, 10ℓ, 4ℓ and 1ℓ.





## TRUMP

HIGH COVERAGE EXTERIOR EMULSION

### EXTERIOR EMULSION PAINT

#### TECHNICAL DETAILS

<b>Nature</b>	Thixotropic
<b>Base</b>	Special acrylic emulsion binder
<b>Finish</b>	Smooth finish
<b>Drying time</b>	15 - 20 minutes for touch dry
<b>Shelf life</b>	3 years
<b>DFT</b>	50 - 60 microns (2 Coats)

#### HANDLING & STORAGE

Keep containers airtight during handling and storage to avoid loss of material. Store Trump in a cool dry place and also protect it from extreme climatic conditions during storage, in transit and at site.

#### PRECAUTIONS

It is not advisable to use any waterproofing chemical as base coat, top coat or as an additive. Over dilution of Trump may result in shade variation, poor hiding, poor bonding or flaking, Excessive brushing and stretching are also to be avoided. No thinner or universal stainer is to be used with Trump Exterior Emulsion Paint.

#### SAFETY MEASURES

Kindly refer to the MSDS for Trump Exterior Emulsion Paint which gives detailed information on safety measures while handling the paint, which is available on request.

Store the container with the lid tightly closed in an upright position, in a cool, dry place.

Keep out of reach of children and away from eatables.

May be harmful if swallowed. In case of ingestion, seek immediate medical attention. In case of skin contact immediately wash skin with soap and plenty of water. Get medical attention if irritation develops or persists.

Wear eye protection during application. In case of contact with eyes, rinse immediately with plenty of water and seek medical advice. Do not breathe vapour or spray. It is recommended to wear suitable nose pad during sanding and surface preparation to avoid dust inhalation.

Do not pour leftover paint down the drain or in water courses.

In the event of spills, contain spillage using sand or earth.

#### POST PAINTING CARE

For the best performance of the paint, ensure proper washing and cleaning at regular intervals of six months.

#### GREEN BUILDING PARAMETERS

Trump qualifies for "GREEN BUILDING CRITERIA"

##### REFERENCE

Type of Paint	LEEDS*	TERI GRIHA*
Exterior Flat	100 g/l VOC	100 g/l VOC
Interior Flat	50 g/l VOC	50 g/l VOC

As per IS 15489 : 2004, Section 6.12.2.1 specifies the "product not to contain more than 5%, by mass, Volatile Organic Compounds"

\* LEED - Leadership in Environment and Energy Design, USA.  
# TERI - The Energy and Resource Institute, India.  
GRIHA - Green Rating Integrated Habitat Assessment.

#### VOLATILE ORGANIC COMPOUNDS

Trump Exterior Emulsion Paint contains less than 40 g/l VOC

Trump Exterior Emulsion Paint contains 1-3% VOC.



#### HEAVY METALS

Trump Exterior Emulsion Paint is free from lead, chromium (VI), cadmium, mercury and its compounds.



#### HAZARDOUS CHEMICALS

Trump Exterior Emulsion Paint does not contain harmful compounds like formaldehyde, phenolic compounds, benzene, etc.





# Snowcem

## P A I N T S

# SNOWCEM PLUS

## SMART ACRYLIC EMULSION

### EXTERIOR EMULSION PAINT

### PRODUCT DESCRIPTION

Snowcem Plus Exterior Emulsion Paint is the most economical choice for users of acrylic paint with protection and decoration. Snowcem Plus can be used for interiors also.

Snowcem Plus Exterior Emulsion Paint : Best value for money, protects and decorates, does not peel off or crack, contains special biocides which protect the paint film against algae and fungi, high colour retention, can be used as self priming coat at 100% dilution, contains special acrylic emulsion binder, quick drying, curing is not required.

### SURFACE PREPARATION

#### PLASTER

New masonry surfaces must be allowed to cure completely. Recommended curing time is 28 days minimum. A coat of Snowcem Special CW Primer is recommended for best performance.



#### CLEANING

Surface should be free from any loose paint, dust or grease. Growth of fungus, algae or moss should be removed by wire brushing and water. For old, friable and difficult surface: A coat of **Snowsol stabilising solution** is recommended. For detailed information please refer **Snowcem Special (CW) Primer / Snowsol** Technical literatures.



#### FILLING THE CRACKS, HOLES & DENTS

For filling cracks upto 3mm, holes and dents use **Snowcare Wall Putty** or white cement and fine sand in the ratio 1:3



For exterior surfaces or substrates that are subjected to continuous seepage or dampness, kindly get the repairs done before the application of paint.

### PAINT APPLICATION PROCESS

APPLICATION	RECOATING PERIOD
STEP 1 <b>SNOWCARE WALL PUTTY</b> (OPTIONAL) TROWEL	O/N
STEP 2 <b>SNOWCEM SPECIAL CW PRIMER</b> BRUSH / ROLLER / SPRAY	4 hrs
STEP 3 <b>SNOWCEM PLUS EXTERIOR EMULSION PAINT</b> BRUSH / ROLLER / SPRAY	4 - 6 hrs
STEP 4 <b>SNOWCEM PLUS EXTERIOR EMULSION PAINT</b> BRUSH / ROLLER / SPRAY	4 - 6 hrs

1. Recoat period is quoted for 25°C and 50% Relative Humidity, these may vary under different atmospheric conditions.
2. Some shades may require 3 coats for proper hiding.

**HORIZONTAL SURFACES LIKE TOP OF WINDOWS, EDGES SHOULD BE PAINTED WITH 3 COATS OF SNOWCEM PLUS EMULSION FOR GREATER PROTECTION**

**APPLICATION OF PRIMER IS MANDATORY**

### PRODUCT FEATURES

*Value For Money*

*Protection With Decoration*

*Can Be Used For Interior Also*

*Anti - Algal / Anti - Fungal*

*3 Years Warranty*

### COLOURS AVAILABLE

**1500+\***

\*Currently available in more than 1500 shades as per the Snowcem Paints Colour Spectra.



### MIXING RATIO

Mix 2 Parts of **Snowcem Plus Exterior Emulsion Paint** with 1 part of clean potable water by volume for better brushability.



### COVERAGE

Coverage 100-140 Sq. ft. per liter per coat. Actual coverage may vary according to the porosity and texture of the surface. For abundant precaution, an initial trial may be undertaken to determine covering capacity on very rough or abnormal surfaces.



### AVAILABLE PACK SIZES

The pack sizes available are **Snowcem Plus Exterior Emulsion Paint** are 20ℓ, 10ℓ, 4ℓ and 1ℓ.







## SNOWCEM PLUS

SMART ACRYLIC EMULSION

### EXTERIOR EMULSION PAINT

#### TECHNICAL DETAILS

<b>Nature</b>	Thixotropic
<b>Base</b>	Acrylic emulsion binder
<b>Finish</b>	Smooth finish
<b>Drying time</b>	15 - 20 minutes for touch dry
<b>Shelf life</b>	3 years
<b>DFT</b>	50 - 60 microns (2 Coats)

#### HANDLING & STORAGE

Keep containers airtight during handling and storage to avoid loss of material. Store Snowcem Plus Exterior Emulsion Paint in a cool dry place and also protect it from extreme climatic conditions during storage, in transit and at site.

#### PRECAUTIONS

It is not advisable to use any waterproofing chemical as base coat, top coat or as an additive. Over dilution of Snowcem Plus may result in shade variation, poor hiding, poor bonding or flaking, Excessive brushing and stretching are also to be avoided. No thinner or universal stainer is to be used with Snowcem Plus Exterior Emulsion Paint.

#### SAFETY MEASURES

Kindly refer to the MSDS for Snowcem Paints Snowcem Plus which gives detailed information on safety measures while handling the paint, which is available on request.

Store the container with the lid tightly closed in an upright position, in a cool, dry place.

Keep out of reach of children and away from eatables.

May be harmful if swallowed. In case of ingestion, seek immediate medical attention. In case of skin contact immediately wash skin with soap and plenty of water. Get medical attention if irritation develops or persists.

Wear eye protection during application. In case of contact with eyes, rinse immediately with plenty of water and seek medical advice. Do not breathe vapour or spray. It is recommended to wear suitable nose pad during sanding and surface preparation to avoid dust inhalation.

Do not pour leftover paint down the drain or in water courses.

In the event of spills, contain spillage using sand or earth.

#### POST PAINTING CARE

For the best performance of the paint, ensure proper washing and cleaning at regular intervals of six months.

#### GREEN BUILDING PARAMETERS

Snowcem Plus qualifies for "GREEN BUILDING CRITERIA"

##### REFERENCE

Type of Paint	LEEDS*	TERI GRIHA*
Exterior Flat	100 g/l VOC	100 g/l VOC
Interior Flat	50 g/l VOC	50 g/l VOC

As per IS 15489 : 2004, Section 6.12.2.1 specifies the "product not to contain more than 5%, by mass, Volatile Organic Compounds"

\* LEED - Leadership in Environment and Energy Design, USA.  
# TERI - The Energy and Resource Institute, India.  
GRIHA - Green Rating Integrated Habitat Assessment.

#### VOLATILE ORGANIC COMPOUNDS

**Snowcem Plus Exterior Emulsion Paint** contains less than 40 g/l VOC

**Snowcem Plus Exterior Emulsion Paint** contains 1-3% VOC.



#### HEAVY METALS

**Snowcem Plus Exterior Emulsion Paint** is free from lead, chromium (VI), cadmium, mercury and its compounds.



#### HAZARDOUS CHEMICALS

**Snowcem Plus Exterior Emulsion Paint** does not contain harmful compounds like formaldehyde, phenolic compounds, benzene, etc.





## ZENITA

ULTIMATE LUXURY EMULSION

### INTERIOR EMULSION PAINT

#### PRODUCT DESCRIPTION

Zenita Interior Emulsion Paint is a premium quality acrylic paint for interiors, it has a unique semi glossy finish which lasts long for years. The special quality binder, high quality additives and quality ingredients make this product very very special.

Ultrafine pigments and very selective grades of extenders with additives for very specific functionalities enhance the product performance.

Flow & drying properties are excellent.

#### SURFACE PREPARATION

##### PLASTER

New masonry surfaces must be allowed to cure completely. Recommended curing time is 28 days minimum. A base coat of Special CW Primer/Universal Primer before application of Zenita Interior Emulsion Paint is recommended for best performance.

##### CLEANING

Surface must be clean and sound, free from all dust, oil, grease and other contaminations. Remove all loose material with scrapper or stiff wire brush. Dampness of the wall has to be treated with appropriate measures.

##### FILLING THE CRACKS, HOLES & DENTS

For filling cracks upto 3mm, holes and dents use Snowcare Wall Putty or White Cement and fine sand in the ratio 1:3

For interior surfaces or substrates that are subjected to continuous seepage or dampness, kindly get the repairs done before the application of paint.



#### PAINT APPLICATION PROCESS

APPLICATION	RECOATING PERIOD
STEP 1 SNOWCEM WALL PUTTY (SNOWCARE/ACRYLIC) TROWEL	O/N
STEP 2 SPECIAL CW PRIMER/UNIVERSAL PRIMER BRUSH / ROLLER / SPRAY	4 hrs
STEP 3 ZENITA INTERIOR EMULSION PAINT BRUSH / ROLLER / SPRAY	4 - 6 hrs
STEP 4 ZENITA INTERIOR EMULSION PAINT BRUSH / ROLLER / SPRAY	4 - 6 hrs

1. Recoat period is quoted for 25°C and 50% Relative Humidity, these may vary under different atmospheric conditions.
2. Some shades may require 3 coats for proper hiding.

HORIZONTAL SURFACES LIKE TOP OF WINDOWS, LEDGES SHOULD BE PAINTED WITH 3 COATS OF ZENITA FOR GREATER PROTECTION

APPLICATION OF PRIMER IS MANDATORY

#### PRODUCT FEATURES

**Excellent Anti Graffiti Effect**

**Durable Semi Glossy Finish**

**Long-lasting Semi Gloss**

**Good Washability**

**Fungi-Algae Resistant**

**Free From Heavy Metals Like Lead, Chromium**

**8 Years Warranty**

#### COLOURS AVAILABLE

**1500+\***

\*Currently available in more than 1500 shades as per the Snowcem Paints Colour Spectra.



#### MIXING RATIO

Dilute 1 liter of ZENITA INTERIOR EMULSION PAINT with 400 ml of potable water. Do not add any stainer other than machine colorant to the ZENITA INTERIOR EMULSION PAINT. Don't over dilute.



#### COVERAGE

Varies according to the porosity and texture of the surface. Coverage for smooth surface with no suction: Approx 180-200 Sq. ft. per liter per coat.



#### AVAILABLE PACK SIZES

The pack sizes available for ZENITA INTERIOR EMULSION PAINT are 20ℓ, 10ℓ, 4ℓ and 1ℓ.





# ZENITA

ULTIMATE LUXURY EMULSION

## INTERIOR EMULSION PAINT

### TECHNICAL DETAILS

<b>Nature</b>	Thixotropic
<b>Base</b>	Special acrylic emulsion
<b>Colour</b>	Available in many attractive shades
<b>Finish</b>	Smooth semi glossy finish.
<b>Mode of application</b>	By brush, roller or spray
<b>Drying time</b>	20-30 min for touch dry (65% relative humidity/30°C.)
<b>Recoating Period</b>	4 to 6 hours.
<b>Shelf life</b>	3 years
<b>DFT</b>	50 - 60 microns (2 Coats)

### HANDLING & STORAGE

Keep containers airtight during handling and storage to avoid loss of material. Store Zenita in a cool dry place and also protect it from extreme climatic conditions during storage, in transit and at site.

### PRECAUTIONS

Apply Snowcare Wall Putty/Acrylic Putty to level the dents and make the surface uniform. Apply one coat of Special CW Primer/Universal Primer. Use emery paper no 320 to lightly sand this surface to achieve uniform smoothness. Clean off the dust with soft and dry cloth. Then apply the diluted Zenita Interior Emulsion Paint.

### SAFETY MEASURES

Kindly refer to the MSDS for Zenita Interior Emulsion Paint which gives detailed information on safety measures while handling the paint, which is available on request.

Store the container with the lid tightly closed in an upright position, in a cool, dry place.  
Keep out of reach of children and away from eatables.

May be harmful if swallowed. In case of ingestion, seek immediate medical attention. In case of skin contact immediately wash skin with soap and plenty of water. Get medical attention if irritation develops or persists.

Wear eye protection during application. In case of contact with eyes, rinse immediately with plenty of water and seek medical advice. Do not breathe vapour or spray. It is recommended to wear suitable nose pad during sanding and surface preparation to avoid dust inhalation.

Do not pour leftover paint down the drain or in water courses.

In the event of spills, contain spillage using sand or earth.

### POST PAINTING CARE

For the best performance of the paint, ensure proper washing and cleaning at regular intervals of six months.

## GREEN BUILDING PARAMETERS

ZENITA qualifies for "GREEN BUILDING CRITERIA"

### REFERENCE

Type of Paint	LEEDS*	TERI GRIHA#
Exterior Flat	100 g/l VOC	100 g/l VOC
Interior Flat	50 g/l VOC	50 g/l VOC

As per IS 15489 : 2004, Section 6.12.2.1 specifies the "product not to contain more than 5%, by mass, Volatile Organic Compounds"

\* LEED - Leadership in Environment and Energy Design, USA.  
# TERI - The Energy and Resource Institute, India.  
GRIHA - Green Rating Integrated Habitat Assessment.

### VOLATILE ORGANIC COMPOUNDS

ZENITA INTERIOR EMULSION PAINT contains less than 40 g/l VOC.

ZENITA INTERIOR EMULSION PAINT contains 1-3% VOC.



### HEAVY METALS

ZENITA INTERIOR EMULSION PAINT is free from lead, chromium (VI), cadmium, mercury and its compounds.



### HAZARDOUS CHEMICALS

ZENITA INTERIOR EMULSION PAINT does not contain harmful compounds like formaldehyde, phenolic compounds, benzene, etc.





## CELESTE

SILKY SMOOTH FINISH

### INTERIOR EMULSION PAINT

#### PRODUCT DESCRIPTION

Celeste Interior Emulsion Paint is a finest acrylic paint for interiors; it has a super rich finish which remains attractive for years. The top class binder, imported additives and quality ingredients make this product very special. Ultimate pigments and very selective grades of extender with additives for very specific functionalities enhance the product performance. Flow properties and drying are excellent. Alkali resistance and mold resistance properties are also incomparable.

#### SURFACE PREPARATION

##### PLASTER

New masonry surfaces must be allowed to cure completely. Recommended curing time is 28 days minimum. A base coat of Special CW Primer/Universal Primer before application of Celeste Interior Emulsion Paint is recommended for best performance.



##### CLEANING

Surface must be clean and sound, free from all dust, oil, grease and other contaminations. Remove all loose material with scrapper or stiff wire brush. Dampness of the wall has to be treated with appropriate measures.



##### FILLING THE CRACKS, HOLES & DENTS

For filling cracks upto 3mm, holes and dents use **Snowcare Wall Putty** or White Cement and fine sand in the ratio 1:3

For interior surfaces or substrates that are subjected to continuous seepage or dampness, kindly get the repairs done before the application of paint.



#### PAINT APPLICATION PROCESS

APPLICATION	RECOATING PERIOD
STEP 1 <b>SNOWCEM WALL PUTTY</b> (SNOWCARE/ACRYLIC) TROWEL	O/N
STEP 2 <b>SPECIAL CW PRIMER/UNIVERSAL PRIMER</b> BRUSH / ROLLER / SPRAY	4 hrs
STEP 3 <b>CELESTE INTERIOR EMULSION PAINT</b> BRUSH / ROLLER / SPRAY	4 - 6 hrs
STEP 4 <b>CELESTE INTERIOR EMULSION PAINT</b> BRUSH / ROLLER / SPRAY	4 - 6 hrs

1. Recoat period is quoted for 25°C and 50% Relative Humidity, these may vary under different atmospheric conditions.
2. Some shades may require 3 coats for proper hiding.

**HORIZONTAL SURFACES LIKE TOP OF WINDOWS, EDGES SHOULD BE PAINTED WITH 3 COATS OF CELESTE FOR GREATER PROTECTION**

**APPLICATION OF PRIMER IS MANDATORY**

#### PRODUCT FEATURES

*Durable Appealing Rich Finish*

*Strong Adhesion Properties*

*Long-Lasting Sheen*

*Non-Yellowing Properties*

*Fungi-Algae Resistant*

*Free from Heavy Metals like lead, chromium*

*6 Years Warranty*

#### COLOURS AVAILABLE

**1500+\***

\*Currently available in more than 1500 shades as per the Snowcem Paints Colour Spectra.



#### MIXING RATIO

Dilute 1 liter of **CELESTE INTERIOR EMULSION PAINT** with 400ml of potable water. Do not add any stainer other than machine colorant to the **CELESTE INTERIOR EMULSION PAINT** Don't over dilute.



#### COVERAGE

Varies according to the porosity and texture of the surface. Coverage for smooth surface with no suction:  
Approx 200 - 220 Sq. ft. per liter per coat.



#### AVAILABLE PACK SIZES

The pack sizes available for **CELESTE INTERIOR EMULSION PAINT** are 20, 10, 4 and 1L.





## CELESTE

SILKY SMOOTH FINISH

### INTERIOR EMULSION PAINT

#### TECHNICAL DETAILS

<b>Nature</b>	Thixotropic
<b>Base</b>	Pure Acrylic Emulsion
<b>Colour</b>	Available in many attractive shades
<b>Finish</b>	Smooth glossy super rich finish
<b>Mode of application</b>	By brush, roller or spray
<b>Drying time</b>	20-30 min for touch dry (65% relative humidity/30°C.)
<b>Recoating Period</b>	4 to 6 hours.
<b>Shelf life</b>	3 years
<b>DFT</b>	50 - 60 microns (2 Coats)

#### HANDLING & STORAGE

Keep containers airtight during handling and storage to avoid loss of material. Store Celeste in a cool dry place and also protect it from extreme climatic conditions during storage, in transit and at site.

#### PRECAUTIONS

Apply Snowcare Wall Putty/Acrylic Putty to level the dents and make the surface uniform. Apply one coat of Special CW Primer/Universal Primer. Use emery paper no 320 to lightly sand this surface to achieve uniform smoothness. Clean off the dust with soft and dry cloth. Then apply the diluted Celeste Interior Emulsion Paint.

#### SAFETY MEASURES

Kindly refer to the MSDS for Celeste Interior Emulsion Paint is free from lead, chromium (VI), cadmium, mercury and its compounds. which gives detailed information on safety measures while handling the paint, which is available on request.

Store the container with the lid tightly closed in an upright position, in a cool, dry place.

Keep out of reach of children and away from eatables.

May be harmful if swallowed. In case of ingestion, seek immediate medical attention. In case of skin contact immediately wash skin with soap and plenty of water. Get medical attention if irritation develops or persists.

Wear eye protection during application. In case of contact with eyes, rinse immediately with plenty of water and seek medical advice. Do not breathe vapour or spray. It is recommended to wear suitable nose pad during sanding and surface preparation to avoid dust inhalation.

Do not pour leftover paint down the drain or in water courses.

In the event of spills, contain spillage using sand or earth.

#### POST PAINTING CARE

For the best performance of the paint, ensure proper washing and cleaning at regular intervals of six months.

#### GREEN BUILDING PARAMETERS

CELESTE qualifies for "GREEN BUILDING CRITERIA"

##### REFERENCE

Type of Paint	LEEDS*	TERI GRIHA <sup>#</sup>
Exterior Flat	100 g/l VOC	100 g/l VOC
Interior Flat	50 g/l VOC	50 g/l VOC

As per IS 15489 : 2004, Section 6.12.2.1 specifies the "product not to contain more than 5%, by mass, Volatile Organic Compounds"

\* LEED - Leadership in Environment and Energy Design, USA.  
# TERI - The Energy and Resource Institute, India.  
GRIHA - Green Rating Integrated Habitat Assessment.

#### VOLATILE ORGANIC COMPOUNDS

**Celeste Interior Emulsion Paint** contains less than 40 g/l VOC. Celeste contains 1-3% VOC.



#### HEAVY METALS

**Celeste Interior Emulsion Paint** is free from lead, chromium (VI), cadmium, mercury and its compounds.



#### HAZARDOUS CHEMICALS

**Celeste Interior Emulsion Paint** does not contain harmful compounds like formaldehyde, phenolic compounds, benzene, etc.





## SENTINO

PREMIUM ACRYLIC FINISH

### INTERIOR EMULSION PAINT

#### PRODUCT DESCRIPTION

Sentino Interior Emulsion Paint is a premium quality acrylic paint for interiors. It has a characteristic soft finish which last long for years. The high quality binder, imported additives and quality ingredients make this product very special. Ultimate pigments and very selective grades of extender with additives for very specific functionalities enhance the product performance. Flow properties and drying are excellent. Good alkali resistance.

#### SURFACE PREPARATION

##### PLASTER

New masonry surfaces must be allowed to cure completely. Recommended curing time is 28 days minimum. A base coat of Special CW Primer/Universal Primer before application Sentino Interior Emulsion Paint is recommended for best performance.



##### CLEANING

Surface must be clean and sound, free from all dust, oil, grease and other contaminations. Remove all loose material with scrapper or by stiff wire brush. Dampness of the wall has to be treated with appropriate measures.



##### FILLING THE CRACKS, HOLES & DENTS

For filling cracks upto 3mm, holes and dents use Snowcare Wall Putty or white cement and fine sand in the ratio 1:3

For interior surfaces or substrates that are subjected to continuous seepage or dampness, kindly get the repairs done before the application of paint.



#### PAINT APPLICATION PROCESS

APPLICATION	RECOATING PERIOD
STEP 1 SNOWCARE WALL PUTTY (SNOWCARE/ACRYLIC) TROWEL	O/N
STEP 2 SPECIAL CW PRIMER/UNIVERSAL PRIMER BRUSH / ROLLER / SPRAY	4 hrs
STEP 3 SENTINO INTERIOR EMULSION PAINT BRUSH / ROLLER / SPRAY	4 - 6 hrs
STEP 4 SENTINO INTERIOR EMULSION PAINT BRUSH / ROLLER / SPRAY	4 - 6 hrs

1. Recoat period is quoted for 25°C and 50% Relative Humidity, these may vary under different atmospheric conditions.
2. Some shades may require 3 coats for proper hiding.

HORIZONTAL SURFACES LIKE TOP OF WINDOWS, EDGES SHOULD BE PAINTED WITH 3 COATS OF SENTINO FOR GREATER PROTECTION

APPLICATION OF PRIMER IS MANDATORY

#### PRODUCT FEATURES

*Durable Pleasant Finish*

*Strong Adhesion Properties*

*Excellent Flow & Leveling*

*Fungi-Algae Resistant*

*Free From Heavy Metals Like Lead, Chromium*

*Imparts A Beautiful Soft Sheen*

*5 Years Warranty*

#### COLOURS AVAILABLE

**1500+\***

\*Currently available in more than 1500 shades as per the Snowcem Paints Colour Spectra.



#### MIXING RATIO

Dilute 1 litre of SENTINO INTERIOR EMULSION PAINT with 600ml of potable water. Do not add any stainer other than machine colorant to the Sentino. Don't over dilute.



#### COVERAGE

Varies according to the porosity and texture of the surface. Coverage for smooth surface with no suction:

Approx 240 - 260 Sq. ft. per liter per coat.



#### AVAILABLE PACK SIZES

The pack sizes available for SENTINO INTERIOR EMULSION PAINT are 20ℓ, 10ℓ, 4ℓ and 1ℓ.





## SENTINO

PREMIUM ACRYLIC FINISH

### INTERIOR EMULSION PAINT

#### TECHNICAL DETAILS

<b>Nature</b>	Thixotropic
<b>Base</b>	Pure acrylic emulsion
<b>Colour</b>	Available in many attractive shades
<b>Finish</b>	Smooth pleasant finish.
<b>Mode of application</b>	By brush, roller or spray
<b>Drying time</b>	20-30 min for touch dry (65% relative humidity/30°C.)
<b>Recoating Period</b>	4 to 6 hours.
<b>Shelf life</b>	3 years
<b>DFT</b>	50 - 60 microns (2 Coats)

#### HANDLING & STORAGE

Keep containers airtight during handling and storage to avoid loss of material. Store Sentino in a cool dry place and also protect it from extreme climatic conditions during storage, in transit and at site.

#### PRECAUTIONS

Apply Snowcare Wall Putty/Acrylic Putty to level the dents and make the surface uniform. Apply one coat of Special CW Primer/Universal Primer. Use emery paper no 320 to lightly sand this surface to achieve uniform smoothness. Clean off the dust with soft and dry cloth. Then apply the diluted Sentino Interior Emulsion Paint.

#### SAFETY MEASURES

Kindly refer to the MSDS for Sentino Interior Emulsion Paint which gives detailed information on safety measures while handling the paint, which is available on request.

Store the container with the lid tightly closed in an upright position, in a cool, dry place.

Keep out of reach of children and away from eatables.

May be harmful if swallowed. In case of ingestion, seek immediate medical attention. In case of skin contact immediately wash skin with soap and plenty of water. Get medical attention if irritation develops or persists.

Wear eye protection during application. In case of contact with eyes, rinse immediately with plenty of water and seek medical advice. Do not breathe vapour or spray. It is recommended to wear suitable nose pad during sanding and surface preparation to avoid dust inhalation.

Do not pour leftover paint down the drain or in water courses.

In the event of spills, contain spillage using sand or earth.

#### POST PAINTING CARE

For the best performance of the paint, ensure proper washing and cleaning at regular intervals of six months.

#### GREEN BUILDING PARAMETERS

SENTINO qualifies for "GREEN BUILDING CRITERIA"

##### REFERENCE

Type of Paint	LEEDS*	TERI GRIHA <sup>#</sup>
Exterior Flat	100 g/l VOC	100 g/l VOC
Interior Flat	50 g/l VOC	50 g/l VOC

As per IS 15489 : 2004, Section 6.12.2.1 specifies the "product not to contain more than 5%, by mass, Volatile Organic Compounds"

\* LEED - Leadership in Environment and Energy Design, USA.  
# TERI - The Energy and Resource Institute, India.  
GRIHA - Green Rating Integrated Habitat Assessment.

#### VOLATILE ORGANIC COMPOUNDS

SENTINO INTERIOR EMULSION PAINT contains less than 40 g/l VOC.

SENTINO INTERIOR EMULSION PAINT contains 1-3% VOC.



#### HEAVY METALS

SENTINO INTERIOR EMULSION PAINT is free from lead, chromium (VI), cadmium, mercury and its compounds.



#### HAZARDOUS CHEMICALS

SENTINO INTERIOR EMULSION PAINT does not contain harmful compounds like formaldehyde, phenolic compounds, benzene, etc.





## SNOWPEARL

SUPER RICH PAINT

### INTERIOR EMULSION PAINT

#### PRODUCT DESCRIPTION

Snowpearl Interior Emulsion Paint is carefully designed value product with a smooth finish. It is developed by thoughtful selection of special raw materials, dispersed in a copolymer emulsion, imparting superior properties and coverage.

It is a long lasting emulsion which helps in obtaining a durable, smooth and pleasant finish. Special additives prevent fungal/algal growth and provide alkali resistance. It can be used as self priming coat at 100% dilution. It has good flow and quick drying properties.

#### SURFACE PREPARATION

##### PLASTER

New masonry surfaces must be allowed to cure completely. Recommended curing time is 28 days minimum. A base coat of Snowpearl Interior Primer before application of Snowpearl Interior Emulsion Paint is recommended for best performance.



##### CLEANING

Surface must be clean and sound, free from all dust, oil, grease and other contaminations. Remove all loose material with scrapper or stiff wire brush. Dampness of the wall has to be treated with appropriate measures.



##### FILLING THE CRACKS, HOLES & DENTS

For filling cracks upto 3mm, holes and dents use Snowcare Wall Putty or White Cement and fine sand in the ratio 1:3. For interior surfaces or substrates that are subjected to continuous seepage or dampness, kindly get the repairs done before the application of paint.



#### PAINT APPLICATION PROCESS

APPLICATION	RECOATING PERIOD
STEP 1 SNOWCEM WALL PUTTY (SNOWCARE/ACRYLIC) TROWEL	O/N
STEP 2 SNOWPEARL INTERIOR PRIMER BRUSH / ROLLER / SPRAY	4 hrs
STEP 3 SNOWPEARL INTERIOR EMULSION PAINT BRUSH / ROLLER / SPRAY	4 - 6 hrs
STEP 4 SNOWPEARL INTERIOR EMULSION PAINT BRUSH / ROLLER / SPRAY	4 - 6 hrs

1. Recoat period is quoted for 25°C and 50% Relative Humidity, these may vary under different atmospheric conditions.
2. Some shades may require 3 coats for proper hiding.

**HORIZONTAL SURFACES LIKE TOP OF WINDOWS, LEDGES SHOULD BE PAINTED WITH 3 COATS OF SNOWPEARL EMULSION FOR GREATER PROTECTION**

**APPLICATION OF PRIMER IS MANDATORY**

#### PRODUCT FEATURES

*Durable Appealing Finish*

*Excellent Performance At Optimum Price*

*Hassle Free Application*

*Fast Drying & Quick Recoatable.*

*Free From Heavy Metals Like Lead, Chromium*

*3 Years Warranty*

#### COLOURS AVAILABLE

**1500+\***

\*Currently available in more than 1500 shades as per the Snowcem Paints Colour Spectra.



#### MIXING RATIO

Dilute 1 litre of **SNOWPEARL INTERIOR EMULSION PAINT** with 500ml of potable water. Do not add any stainer other than machine colorant to the Snowpearl. Don't over dilute.



#### COVERAGE

Varies according to the porosity and texture of the surface. Coverage for smooth surface with no suction: Approx 180 - 200 Sq. ft. per liter per coat.



#### AVAILABLE PACK SIZES

The pack sizes available for **SNOWPEARL INTERIOR EMULSION PAINT** are 20 ℓ, 10 ℓ, 4 ℓ and 1ℓ.







## SNOWPEARL

SUPER RICH PAINT

### INTERIOR EMULSION PAINT

#### TECHNICAL DETAILS

<b>Nature</b>	Thixotropic
<b>Base</b>	Acrylic emulsion binder & other additives
<b>Colour</b>	Available in many attractive shades
<b>Finish</b>	Excellent smooth finish
<b>Mode of application</b>	By brush, roller or spray.
<b>Drying time</b>	20-30 min for touch dry (65% relative humidity/30°C.)
<b>Recoating Period</b>	4 to 6 hours.
<b>Shelf Life</b>	3 years
<b>DFT</b>	50 - 60 microns (2 Coats)

#### HANDLING & STORAGE

Keep containers airtight during handling and storage to avoid loss of material. Store Snowpearl in a cool dry place and also protect it from extreme climatic conditions during storage, in transit and at site.

#### PRECAUTIONS

Apply Snowcare Wall Putty/Acrylic Putty to level the dents and make the surface uniform. Apply one coat of Snowpearl Interior Primer. Use emery paper no 320 to lightly sand this surface to achieve uniform smoothness. Clean off the dust with soft and dry cloth. Then apply the diluted Snowpearl Interior Emulsion Paint.

#### SAFETY MEASURES

Kindly refer to the MSDS for Snowpearl Interior Emulsion Paint which gives detailed information on safety measures while handling the paint, which is available on request.

Store the container with the lid tightly closed in an upright position, in a cool, dry place.  
Keep out of reach of children and away from eatables.

May be harmful if swallowed. In case of ingestion, seek immediate medical attention. In case of skin contact immediately wash skin with soap and plenty of water. Get medical attention if irritation develops or persists.

Wear eye protection during application. In case of contact with eyes, rinse immediately with plenty of water and seek medical advice. Do not breathe vapour or spray. It is recommended to wear suitable nose pad during sanding and surface preparation to avoid dust inhalation.

Do not pour leftover paint down the drain or in water courses.

In the event of spills, contain spillage using sand or earth.

#### POST PAINTING CARE

For the best performance of the paint, ensure proper washing and cleaning of all algal and fungal growth, if any, at regular intervals of six months.

#### GREEN BUILDING PARAMETERS

SNOWPEARL qualifies for "GREEN BUILDING CRITERIA"

##### REFERENCE

Type of Paint	LEEDS*	TERI GRIHA <sup>#</sup>
Exterior Flat	100 g/l VOC	100 g/l VOC
Interior Flat	50 g/l VOC	50 g/l VOC

As per IS 15489 : 2004, Section 6.12.2.1 specifies the "product not to contain more than 5%, by mass, Volatile Organic Compounds"

\* LEED - Leadership in Environment and Energy Design, USA.  
# TERI - The Energy and Resource Institute, India.  
GRIHA - Green Rating Integrated Habitat Assessment.

#### VOLATILE ORGANIC COMPOUNDS

SNOWPEARL INTERIOR EMULSION PAINT contains less than 40 g/l VOC.

SNOWPEARL INTERIOR EMULSION PAINT contains 1-3% VOC.



#### HEAVY METALS

SNOWPEARL INTERIOR EMULSION PAINT is free from lead, chromium (VI), cadmium, mercury and its compounds.



#### HAZARDOUS CHEMICALS

SNOWPEARL INTERIOR EMULSION PAINT does not contain harmful compounds like formaldehyde, phenolic compounds, benzene, etc.





## SNOWPEARL

ACRYLIC DISTEMPER

### PRODUCT DESCRIPTION

Snowpearl Acrylic Distemper is a smooth & state of the art technology for interior walls & surfaces in paste form. It is 100% water based product. It is also acrylic Co-polymer emulsion based distemper for interior walls & surfaces only. It is the best known for low cost, elegant, smooth, attractive, durable matt finish. It is specially formulated by using ultrafine minerals, biocides, and alkali resistant superior acrylic co-polymer. The unique processing technology of this product ensures smoothness and consistency. The special binder used in Snowpearl Acrylic Distemper imparts a strong adhesion to the wall surface thus increasing the life of the paint film.

### SURFACE PREPARATION

#### PLASTER

New masonry surfaces must be allowed to cure completely. Recommended curing time is 28 days minimum. A base coat of Snowpearl Interior Primer and better finish before application of Snowpearl Acrylic Distemper can also be done.

#### CLEANING

Surface must be clean and sound, free from all dust, oil, grease and other contaminations. Remove all loose material with scrapper or stiff wire brush. Dampness of the wall has to be treated with appropriate measures.

#### FILLING THE CRACKS, HOLES & DENTS

For filling cracks upto 3mm, holes and dents use Snowcare Wall Putty or white cement and fine sand in the ratio 1:3. For interior surfaces or substrates that are subjected to continuous seepage or dampness, kindly get the repairs done before the application of paint.

Apply Snowcare Wall Putty to level the dents and make the surface uniform. Apply one coat of Snowpearl Interior Primer. Use emery paper no 320 to lightly sand this surface to achieve uniform smoothness. Clean off the dust with soft and dry cloth. Then apply the diluted Snowpearl Acrylic Distemper.

### PAINT APPLICATION PROCESS

APPLICATION	RECOATING PERIOD
STEP 1 SANDING	Sand the surface with sand paper 180 and wipe clean.
STEP 2 SNOWPEARL INTERIOR PRIMER BRUSH / ROLLER / SPRAY	4 - 6 hrs
STEP 3 SNOWCARE WALL PUTTY/ACRYLIC PUTTY TROWEL/PUTTY KNIFE/BLADE	4-6 hours depending upon climatic condition, If required apply 2 coats, sand the surface with sand paper 320 and wipe clean.
STEP 4 SNOWPEARL INTERIOR PRIMER BRUSH/ROLLER/SPRAY	4 - 6 hrs
STEP 5 SNOWPEARL ACRYLIC DISTEMPER BRUSH/ROLLER/SPRAY	4 - 6 hrs (2 coats)

1. Recoat period is quoted for 25°C and 50% Relative Humidity; these may vary under different atmospheric conditions.
2. Some shades may require 3 coats for proper hiding.

APPLICATION OF PRIMER IS MANDATORY

### PRODUCT FEATURES

**Excellent Whiteness & Smoothness**

**Excellent Performance At Optimum Price**

**It Can Be Diluted With Water.**

**Fungi-Algae Resistant.**

**Fast Drying & Quick Recoatable**

**Free From Heavy Metals Like Lead, Chromium.**

#### COLOURS AVAILABLE

**White & Shades**  
as per our shade card.

#### MIXING RATIO

Dilute 1 kg of **Snowpearl Acrylic Distemper** with 500ml of potable water. Do not add any stainer other than machine colorant to the Snowpearl Acrylic Distemper Don't over dilute.

#### COVERAGE

Varies according to the porosity and texture of the surface. Coverage for smooth surface with no suction approx 100-120 Sq. ft. per kg per coat.

#### AVAILABLE PACK SIZES

The pack sizes available for **Snowpearl Acrylic Distemper** are 20 kg, 10 kg, 5 kg, 1 kg & 30 kg for project in plastic container. All our packing has **Snowcem Paints Hologram**, a mark of genuineness.





## SNOWPEARL

ACRYLIC DISTEMPER

### TECHNICAL DETAILS

<b>Nature</b>	Thick paste
<b>Base</b>	Acrylic emulsion binder & other additives.
<b>Colour</b>	Available In many attractive shades.
<b>Finish</b>	Smooth finish.
<b>Mode of application</b>	By brush, roller or spray.
<b>Drying time</b>	20-30 min for touch dry (65% relative humidity/30°C.)
<b>Recoating Period</b>	4 to 6 hours.
<b>Shelf life</b>	3 Years
<b>DFT</b>	50 - 60 microns (2 coats)

### HANDLING & STORAGE

Keep containers/sacks airtight during handling and storage to avoid loss of material. Store Snowpearl Acrylic Distemper in a cool dry place and also protect it from extreme climatic conditions during storage, in transit and at site.

### PRECAUTIONS

Apply Snowcare Wall Putty to level the dents and make the surface uniform. Apply one coat of Snowpearl Acrylic Distemper. Use emery paper no 320 to lightly sand this surface to achieve uniform smoothness. Clean off the dust with soft and dry cloth. Then apply the diluted Snowpearl Acrylic Distemper.

### SAFETY MEASURES

Kindly refer to the MSDS for Snowpearl Acrylic Distemper which gives detailed information on safety measures while handling the paint, which is available on request.

Store the container with the lid tightly closed in an upright position, in a cool, dry place. Keep out of reach of children and away from eatables.

May be harmful if swallowed. In case of ingestion seek immediate medical attention. In case of skin contact immediately wash skin with soap and plenty of water. Get medical attention if irritation develops or persists.

Wear eye protection during application. In case of contact with eyes, rinse immediately with plenty of water and seek medical advice. Do not breathe vapour or spray. It is recommended to wear suitable nose pad during sanding and surface preparation to avoid dust inhalation.

Do not pour leftover paint down the drain or in watercourses.

In the event of spills, contain spillage using sand or earth.

### POST PAINTING CARE

Ensure a drying time of minimum 2 weeks from the date of application Clean with dry & soft cloth.

### GREEN BUILDING PARAMETERS

SNOWPEARL qualifies for "GREEN BUILDING CRITERIA"

#### REFERENCE

Type of Paint	LEEDS*	TERI GRIHA <sup>#</sup>
Exterior Flat	100 g/l VOC	100 g/l VOC
Interior Flat	50 g/l VOC	50 g/l VOC

As per IS 15489 : 2004, Section 6.12.2.1 specifies the "product not to contain more than 5%, by mass, Volatile Organic Compounds"

\* LEED - Leadership in Environment and Energy Design, USA.  
# TERI - The Energy and Resource Institute, India.  
GRIHA - Green Rating Integrated Habitat Assessment.

#### VOLATILE ORGANIC COMPOUNDS

SNOWPEARL ACRYLIC DISTEMPER contains less than 40 g/l VOC.

SNOWPEARL ACRYLIC DISTEMPER contains 1-3% VOC.



#### HEAVY METALS

SNOWPEARL ACRYLIC DISTEMPER is free from lead, chromium (VI), cadmium, mercury and its compounds.



#### HAZARDOUS CHEMICALS

SNOWPEARL ACRYLIC DISTEMPER does not contain harmful compounds like formaldehyde, phenolic compounds, benzene, etc.





# Snowcem P A I N T S

## SNOWCEM PLUS PREMIUM WATERPROOF CEMENT PAINT

### PRODUCT DESCRIPTION

SNOWCEM PLUS is Premium Waterproof Cement Paint, specially formulated for better brushability, easy mixing and application, longer pot life and extra covering capacity. Snowcem Plus Premium Waterproof Cement Paint the best protective cement paint coat against moisture, salinity and decay causing bacteria. Snowcem Plus Premium Waterproof Cement Paint for better utility- more saving. Snowcem Plus Premium Waterproof Cement Paint is based on white Portland cement and additives that enhance ease of application and water repellency .It contains pigment that are resistant to heat & light. It requires addition of water only in one stage. Mixing is thus much easier. Can be Used as Basecoat also.

### SURFACE PREPARATION

#### PLASTER

New masonry surfaces must be allowed to cure completely. It is recommended to allow 28 days as the curing time for new masonry surfaces.

#### CLEANING

Ensure the surface is completely free from all dirt, loosely held plaster, powdery residue, oil, grease or any other contamination. Any previous growth of fungus, algae or moss needs to be removed thoroughly by vigorous wire brushing and cleaning with water. One Coat of SNOWCEM BIOWASH is recommended to prevent further growth of algae, fungus or moss.

#### FILLING THE CRACKS, HOLES & DENTS

For filling cracks upto 3mm, holes and dents use Snowcare Wall Putty or white cement and fine sand in the ratio 1:3 For exterior surfaces or substrates that are subjected to continuous seepage or dampness, kindly get the repairs done before the application of paint.



### APPLICATION RECOMMENDATION

- Concrete surfaces.
- Wall & fiberboards.
- Asbestos cement sheets.
- Cement/lime/Sand renderings
- Rough cast & pebbledash
- Sand lime bricks.
- Stock or facing bricks.
- Concrete blocks & bricks.
- Clinker & other light weight concrete blocks.
- Decorative cement products.
- Concrete precast units.

### RECOMMENDED PRIMER

SNOWCEM PLUS PREMIUM WATERPROOF CEMENT PAINT can be applied on the surfaces to improve its adhesive properties, especially on smooth wall surfaces or bricks with sulphates, old cement paint surface, distempers, lime blocks & smooth non absorbent cement surfaces, CEMPROVER cement primer mixed with an equal measure of clean water should be applied as priming coat. For problematic areas, use of CEMPROVER is also recommended in extremely hot condition before application of SNOWCEM PLUS PREMIUM WATERPROOF CEMENT PAINT to any surface. When thoroughly dry, 2 coats of SNOWCEM PLUS PREMIUM WATERPROOF CEMENT PAINT can be applied. It helps to reduce efflorescence effect to some extent if a prime coat of CEMPROVER is given before application of SNOWCEM PLUS PREMIUM WATERPROOF CEMENT PAINT.

### PRE PAINTING CARE

Pre-wet surface to be painted with clean water and allow the water to run off. Loosen the contents of SNOWCEM PLUS each sack by rolling the sack before opening for the first time. Cut open the multi walled sack of SNOWCEM PLUS to be used. Apply properly mixed SNOWCEM PLUS with a good quality brush. Surface should be wetted from bottom to top with a fine water spray. Do not use saline water for curing surfaces painted with SNOWCEM PLUS PREMIUM WATERPROOF CEMENT PAINT.

### PRODUCT FEATURES

- High strength
- Breathable paint
- Superior brushability
- Reflects heat.
- Economical protection
- Provide a durable, waterproof surface.
- Repels rain on external surfaces & prevents penetration of damp.
- Forms hard surface, which gets harder with time.
- Greater coverage & lesser labor cost because of its superior brushability.
- Has longer pot life compared to other cement paints.
- More quantity of paint can be mixed at once.
- When applied & cured according to instructions, it will not flake or peel off.

### COLOURS AVAILABLE

**WHITE\* & 30+** standard shades & given special shades as per requirement.



### MIXING RATIO

To one volume of fresh water in a clean container add equal volume of SNOWCEM PLUS (1:1) and stir well to get uniform consistency. No further dilution is required and SNOWCEM PLUS is ready for application.



### COVERAGE

Varies according to the porosity and texture of the surface. When mixed to normal consistency, approximate covering capacity of SNOWCEM PLUS is as follows.



Surface	Coverage in Sq.ft/kg/coat approx
Rough cast & pebbledash	22-36
Concrete blocks	35.2-60
Suitable brickwork	36.2-64
Rendering- cement/sand	44-64
In-situ concrete	64-81
Wall & fibre boards	55-90

### AVAILABLE PACK SIZES

The pack sizes available for SNOWCEM PLUS are 25 kg & 5 kg in laminated synthetic sacks & 1 kg in poly pouches. All our packing has Snowcem Paints Hologram, a mark of genuineness. Please preserve batch number and cash memos for future reference. SNOWCEM PLUS PREMIUM WATERPROOF CEMENT PAINT empty sacks should be destroyed.





# SNOWCEM PLUS

## PREMIUM WATERPROOF CEMENT PAINT

### PAINT APPLICATION PROCESS

APPLICATION	RECOATING PERIOD
STEP 1 <b>PRE WETTING</b>	Pre-wet the surface with clean water, wait for 30 min.
STEP 2 <b>CEMPROVER</b> CEMENT PRIMER (1:1) DILUTED WITH WATER	6-8 hours depending upon climatic condition.
STEP 3 <b>SNOWCEM PLUS PREMIUM WATERPROOF CEMENT PAINT</b> BRUSH / SPRAY	12-18 hrs
STEP 4 <b>WETTING WITH WATER</b> FINE SPRAY OF WATER	Wait for 30 min.
STEP 5 <b>SNOWCEM PLUS PREMIUM WATERPROOF CEMENT PAINT</b> BRUSH / SPRAY	12-18 hrs
STEP 6 <b>WETTING WITH WATER</b> FINE SPRAY OF WATER	1 or 2 curing required for completely setting of paint.

1. Recoat period is quoted for 25°C and 50% Relative Humidity; these may vary under different atmospheric conditions.

### TECHNICAL DETAILS

<b>Nature</b>	Fine powder form
<b>Base</b>	White Portland cement and other additives
<b>Colour</b>	Available in many attractive shades.
<b>Finish</b>	Beautiful matt finish.
<b>Mode of application</b>	Either to be brushed or sprayed
<b>Curing</b>	1 <sup>st</sup> & 2 <sup>nd</sup> coat should be cured properly.
<b>Drying Time</b>	6-8 hours depending on climatic conditions.
<b>Recoating period</b>	12-18 hours depending on climatic conditions.
<b>Shelf life</b>	3 years

### HANDLING & STORAGE

Keep sacks airtight during handling and storage to avoid loss of material. Store SNOWCEM PLUS in a cool dry place and also protect it from extreme climatic conditions during storage, in transit and at site.

### IMPORTANT PRECAUTIONS

- SNOWCEM PLUS is not recommended for external application to common bricks unless these bricks are dry at the time of application and design of the structure affords maximum protection from moisture penetration.
- It cannot be applied directly on surfaces containing gypsum plaster, chunam, lime washes, oil paint, varnishes, oil bound distemper or emulsion paints.
- On chunam and lime wash surfaces, SNOWCEM PLUS can be applied after completely removing chunam/lime by wire brush and washing it down with water and then applying a coat of CEMPROVER cement primer.
- On CEMPROVER primed surfaces no pre-wetting is required for the 1st coat application of SNOWCEM PLUS. Normal curing after 1st and 2nd coat should be followed. Surfaces with oil or resin based paints should not be painted with SNOWCEM PLUS.
- SNOWCEM PLUS provides excellent protection against rain, water etc. It is therefore not advisable to use any waterproofing chemical as basecoat, additive or topcoat. Use of lime wash, white cement or any cement paint other than SNOWCEM PLUS as base coat is not recommended.
- Inter mixing of shades is also not recommended. An aquamarine shade is liable to fleet thus use only for interiors. Use of dark shades is not recommended over large unrelieved areas as efflorescence may appear more prominently on dark shades. Dark shades require more curing than light shades.

### GREEN BUILDING PARAMETERS

SNOWCEM PLUS qualifies for "GREEN BUILDING CRITERIA"

#### REFERENCE

Type of Paint	LEEDS*	TERI GRIHA*
Exterior Flat	100 g/l VOC	100 g/l VOC

As per IS 15489 : 2004, Section 6.12.2.1 specifies the "product not to contain more than 5%, by mass, Volatile Organic Compounds"

\* LEED - Leadership in Environment and Energy Design, USA.  
# TERI - The Energy and Resource Institute, India.  
GRIHA - Green Rating Integrated Habitat Assessment.

**VOLATILE ORGANIC COMPOUNDS**  
SNOWCEM PLUS PREMIUM WATERPROOF CEMENT PAINT contains ZERO VOC.



#### HEAVY METALS

SNOWCEM PLUS PREMIUM WATERPROOF CEMENT PAINT does not contain harmful compounds like formaldehyde, phenolic compounds, benzene, etc.



#### HAZARDOUS CHEMICALS

SNOWCEM PLUS PREMIUM WATERPROOF CEMENT PAINT is free from lead, chromium (VI), cadmium, mercury and its compounds.





# Snowcem P A I N T S

## CEMCOLOUR WATERPROOF CEMENT PAINT

### PRODUCT DESCRIPTION

CEMCOLOUR is an economy colour coating for exteriors. It is formulated for easy mixing and application. CEMCOLOUR for lesser initial investment and good appearance. CEMCOLOUR is based on white Portland cement and other ingredients which make it easy to apply and water repellent. It requires addition of water only in one stage. It contains pigment that are resistant to heat & light. Can be Used Basecoat also.

### SURFACE PREPARATION

#### PLASTER

New masonry surfaces must be allowed to cure completely. It is recommended to allow 28 days as the curing time for new masonry surfaces.

#### CLEANING

Ensure the surface is completely free from all dirt, loosely held plaster, powdery residue, oil grease or any other contamination. Any previous growth of fungus, algae or moss needs to be removed thoroughly by vigorous wire brushing and cleaning with water. One Coat of SNOWCEM BIOWASH is recommended to prevent further growth of algae, fungus or moss.

#### FILLING THE CRACKS, HOLES & DENTS

For filling cracks upto 3mm, holes and dents use Snowcare Wall Putty or White cement and fine sand in the ratio 1:3 For exterior surfaces or substrates that are subjected to continuous seepage or dampness, kindly get the repairs done before the application of paint.

### RECOMMENDED PRIMER

CEMCOLOUR can be applied on the surfaces to improve its adhesion properties, especially on smooth wall surfaces or bricks, old cement paint surface, distempers, lime blocks & smooth non absorbent cement surfaces, CEMPROVER cement primer mixed with an equal measure of clean water should be applied as priming coat. Use of CEMPROVER is also recommended in extremely hot condition before application of CEMCOLOUR to any surface. When thoroughly dry, 2 coats of CEMCOLOUR can be applied. It helps to reduce efflorescence effect to some extent if a prime coat of CEMPROVER is given before application of CEMCOLOUR.

### PRE PAINTING CARE

Pre-wet surface to be painted with clean water and allow the water to run off. Loosen the contents of CEMCOLOUR each sack of by rolling the sack before opening for the first time. Cut open the multi walled sack of CEMCOLOUR to be used. Apply properly mixed CEMCOLOUR with a good quality brush. Application should be wetted from bottom to top with a fine water spray. Do not use saline water for curing surfaces painted with CEMCOLOUR.

### PAINT APPLICATION PROCESS

APPLICATION	RECOATING PERIOD
STEP 1 <b>PRE WETTING</b>	Pre-wet the surface with clean water, wait for 30 min.
STEP 2 <b>CEMPROVER</b> CEMENT PRIMER (1:1) DILUTED WITH WATER.	6-8 hours depending upon climatic condition.
STEP 3 <b>CEMCOLOUR</b> BRUSH / SPRAY	12-18 hrs
STEP 4 <b>WETTING WITH WATER</b> FINE SPRAY OF WATER	Wait for 30 Mn.
STEP 4 <b>CEMCOLOUR</b> BRUSH / SPRAY	12-18 hrs
STEP 5 <b>WETTING WITH WATER</b> FINE SPRAY OF WATER	1 or 2 curing required for completely setting of paint



### PRODUCT FEATURES

*Economy Colour Coating*

*Based On White Portland Cement.*

*Breathable Paint.*

*Becomes An Integral Part of The Plaster*

*Does Not Peel Off Or Flake When Applied And Cured According To Instructions.*

*It Is An Excellent Reflector Of Heat & Light In Lighter Shades.*

#### COLOURS AVAILABLE

WHITE & 30+ standard shades & given special shades as per requirement.



#### MIXING RATIO

To one volume of fresh water in a clean container add equal volume of CEMCOLOUR (1:1) and stir well to get uniform consistency. No further dilution is required and CEMCOLOUR is ready for application.



#### COVERAGE

Varies according to the porosity and texture of the surface. When mixed to normal consistency, approximate covering capacity of CEMCOLOUR is 46-66 Sq. ft./kg/coat (approx) for cement/sand renderings.



#### AVAILABLE PACK SIZES

The pack sizes available for CEMCOLOUR is 25 kg in laminated synthetic sacks. All our packing has Snowcem Paints Hologram, a mark of genuineness. Please preserve batch number and cash memos for future reference. CEMCOLOUR empty sacks should be destroyed.





# CEMCOLOUR

## WATERPROOF CEMENT PAINT

### TECHNICAL DETAILS

<b>Nature</b>	Fine powder form
<b>Base</b>	White portland cement and other additives
<b>Colour</b>	Available in many attractive shades
<b>Finish</b>	Good matt finish
<b>Mode of application</b>	Either to be brushed or sprayed
<b>Curing</b>	1 <sup>st</sup> & 2 <sup>nd</sup> coat should be cured properly
<b>Recoating period</b>	12-18 hours depending on climatic conditions
<b>Shelf life</b>	3 years

### HANDLING & STORAGE

Keep sacks airtight during handling and storage to avoid loss of material. Store CEMCOLOUR in a cool dry place and also protect it from extreme climatic conditions during storage, in transit and at site.

### IMPORTANT PRECAUTIONS

CEMCOLOUR is not recommended for external application to common bricks unless these bricks are dry at the time of application and design of the structure affords maximum protection from moisture penetration.

It cannot be applied directly on surfaces containing gypsum plaster, chunam, lime washes, oil paint, varnishes, oil bound distemper or emulsion paints.

On chunam and lime wash surfaces, CEMCOLOUR can be applied after completely removing chunam/lime by wire brush and washing it down with water and then applying a coat of CEMPROVER cement primer.

On CEMPROVER primed surfaces no pre-wetting is required for the 1st coat application of CEMCOLOUR. Normal curing after 1st and 2nd coat should be followed.

CEMCOLOUR provides excellent protection against rain, water etc. It is therefore not advisable to use any waterproofing chemical as basecoat, additive or topcoat. Use of lime wash, white cement or any cement paints other than CEMCOLOUR as base coat is not recommended.

Inter mixing of shades is also not recommended. An aquamarine shade is liable to fleet thus use only for interiors. Use of dark shades is not recommended over large unrelieved areas as efflorescence may appear more prominently on dark shades. Dark shades require more curing than light shades.

New plaster should be 8 weeks old, properly cured, dry and well set before application. CEMCOLOUR must only be applied when there is no risk of rain or frost during application and drying period. Keep the partly used sack properly tied up.

CEMCOLOUR if exposed to atmosphere, it may affect single stage mixing due to air/setting and may also result in deterioration of some ingredients.

### SAFETY MEASURES

Kindly refer to the MSDS for Snowcem Paints CEMCOLOUR which gives detailed information on safety measures while handling the paint, which is available on request.

Keep out of reach of children and away from eatables.

May be harmful if swallowed. In case of ingestion seek immediate medical attention. In case of skin contact immediately wash skin with soap and plenty of water. Get medical attention if irritation develops or persists.

Wear eye protection during application. In case of contact with eyes, rinse immediately with plenty of water and seek medical advice. Do not breathe vapour or spray. It is recommended to wear suitable nose pad during sanding and surface preparation to avoid dust inhalation.

Do not pour leftover paint down the drain or in watercourses.

In the event of spills, contain spillage using sand or earth.

### POST PAINTING CARE

**For the best performance of the paint, ensure proper washing and cleaning at regular intervals of six months.**

### GREEN BUILDING PARAMETERS

CEMCOLOUR qualifies for "GREEN BUILDING CRITERIA"

#### REFERENCE

Type of Paint	LEEDS*	TERI GRIHA <sup>#</sup>
Exterior Flat	100 g/l VOC	100 g/l VOC
Interior Flat	50 g/l VOC	50 g/l VOC

As per IS 15489 : 2004, Section 6.12.2.1 specifies the "product not to contain more than 5%, by mass, Volatile Organic Compounds"

\* LEED - Leadership in Environment and Energy Design, USA.  
# TERI - The Energy and Resource Institute, India.  
GRIHA - Green Rating Integrated Habitat Assessment.

**VOLATILE ORGANIC COMPOUNDS**  
CEMCOLOUR contains ZERO VOC.



#### HEAVY METALS

CEMCOLOUR is free from lead, chromium (VI), cadmium, mercury and its compounds.



#### HAZARDOUS CHEMICALS

CEMCOLOUR does not contain harmful compounds like formaldehyde, phenolic compounds, benzene, etc.





## SNOWCARE WALL PUTTY

### EXTERIOR/INTERIOR WALL PUTTY

#### PRODUCT DESCRIPTION

**SNOWCARE WALL PUTTY** is a combination of high quality white Portland cement, natural minerals, special additives & polymers. It is specially manufactured to impart toughness, durability, binding, waterproofing and longer life to exterior and interior surfaces. SNOWCARE hides the minor imperfections of the surface and prevents hairline cracks to appear on the surface.

#### SURFACE PREPARATION

##### PLASTER

New masonry surfaces must be allowed to cure completely. It is recommended to allow 28 days as the curing time for new masonry surfaces.



##### CLEANING

Ensure the surface is completely free from all dirt, loosely held plaster, powdery residue, oil grease or any other contamination. Any previous growth of fungus, algae or moss needs to be removed thoroughly by vigorous wire brushing and cleaning with water.



##### FILLING THE CRACKS, HOLES & DENTS

For filling cracks upto 3mm, holes and dents use white cement and fine sand in the ratio 1:3  
For Interior surfaces or substrates that are subjected to continuous seepage or dampness, kindly get the repairs done before the application of paint.



#### PAINT APPLICATION PROCESS

APPLICATION	RECOATING PERIOD
STEP 1 <b>SANDING</b>	Sand the surface with emery paper 180 and wipe clean
STEP 2 <b>PRE WET THE SURFACE</b>	Pre wet the surface before application of 1st coat of SNOWCARE WALL PUTTY.
STEP 3 (1st Coat) <b>SNOWCARE WALL PUTTY</b> TROWEL/PUTTY KNIFE	Mix SNOWCARE WALL PUTTY with water 40% by volume. wait for 10 to 15 minutes. Mix it & then apply. 6 to 8 Hours. Depending upon climatic condition.
STEP 4 (2nd Coat) <b>SNOWCARE WALL PUTTY</b> TROWEL/PUTTY KNIFE	6 to 8 Hours. Depending upon climatic condition. Sand the surface with emery paper 320 & wipe clean.
STEP 5 <b>APPLICATION OF PRIMER AND EMULSION COAT</b> BRUSH / ROLLER / SPRAY	Apply a coat of PRIMER followed by 2-3 coats of emulsion paint.

Recoat period is quoted for 25°C and 50% Relative Humidity, these may vary under different atmospheric conditions.

#### PRODUCT FEATURES

*Gives Toughness To The Surface*

*Does Not Require Curing With Water.*

*Good Water Resistance.*

*Increases Durability Of The Surface*

*Provides Smooth & Uniform Finish To Rough Plasters.*

*Controlled Water Vapour Permeability*

*Fills Hair Cracks & Pinholes.*

*Excellent Abrasion Resistance.*

*Resists Growth Of Algae And Fungi On Wall.*

#### COLOURS AVAILABLE

##### WHITE\*

Please Note - SNOWCARE WALL PUTTY is an undercoat.



#### MIXING RATIO

Dilute one kg of SNOWCARE WALL PUTTY with 400 ml of clean potable water, mixed with carefully with hand or by specially equipment available in market. Wait for 10 minutes & apply with putty knife/Trowel or putty blade. Don't over dilute SNOWCARE WALL PUTTY.



#### COVERAGE

When mixed to proper consistency, approx. 10-12 Sq. ft. per kg. for upto 1.5 mm thickness in 2 coats. Coverage depends on surface condition/preparation and varies according to texture, suction / porosity of the surface, method of application and thickness of coat. For abundant precaution, an initial trial may be undertaken to determine covering capacity on very rough or abnormal surface.



#### AVAILABLE PACK SIZES

The pack sizes available for SNOWCARE WALL PUTTY are 20 kg and 5 kg, 1 kg poly bags and 40 kg for projects. All our packing has Snowcem Paints Hologram, a mark of genuineness.







## SNOWCARE WALL PUTTY

### EXTERIOR/INTERIOR WALL PUTTY

#### TECHNICAL DETAILS

<b>Nature</b>	White Powder
<b>Base</b>	White Portland cement, natural minerals & polymers.
<b>Colour</b>	White.
<b>Finish</b>	Smooth Finish.
<b>Mode of application</b>	Trowel, Putty Knife/blade.
<b>Drying Time</b>	4 hours under normal climatic conditions.
<b>Recoating period</b>	6 to 8 hours.
<b>Potlife</b>	To be used within 1 hour after mixing.

#### HANDLING & STORAGE

Keep sacks airtight during handling and storage to avoid loss of material. Store **SNOWCARE WALL PUTTY** in a cool dry place and also protect it from extreme climatic conditions during storage, in transit and at site.

#### SAFETY MEASURES

Kindly refer to the MSDS for **SNOWCARE WALL PUTTY** which gives detailed information on safety measures while handling the paint, which is available on request.

Store the material in a cool, dry place. Keep out of reach of children and away from eatables.

May be harmful if swallowed. In case of ingestion seek immediate medical attention. In case of skin contact immediately wash skin with soap and plenty of water. Get medical attention if irritation develops or persists.

Wear eye protection during application. In case of contact with eyes, rinse immediately with plenty of water and seek medical advice. Do not breathe vapour or spray. It is recommended to wear suitable nose pad during sanding and surface preparation to avoid dust inhalation.

Do not pour leftover paint down the drain or in watercourses.

In the event of spills, contain spillage using sand or earth.

#### POST PAINTING CARE

It is important to apply a coat of **PRIMER (EXT/INT)** over **SNOWCARE WALL PUTTY** before application of emulsion Paint.



**VOLATILE ORGANIC COMPOUNDS**

**SNOWCARE WALL PUTTY** contains **ZERO VOC**



**HEAVY METALS**

**SNOWCARE WALL PUTTY** is free from lead, chromium (VI), cadmium, mercury and its compounds.



**HAZARDOUS CHEMICALS**

**SNOWCARE WALL PUTTY** does not contain harmful compounds like formaldehyde, phenolic compounds, benzene, etc.





## SPECIAL (CW) PRIMER

### PRIMER FOR EXTERIOR

#### PRODUCT DESCRIPTION

Snowcem Special (CW) Primer is specially formulated for both concrete as well as wooden surfaces. It is based on Acrylic Co-Polymer Emulsion.

#### SURFACE PREPARATION

##### PLASTER

New masonry surfaces must be allowed to cure completely. It is recommended to allow 28 days as the curing time for new masonry surfaces.

##### CLEANING

Ensure the surface is completely free from all dirt, loosely held plaster, powdery residue, oil grease or any other contamination. Any previous growth of fungus, algae or moss needs to be removed thoroughly by vigorous wire brushing and cleaning with water. One Coat of SNOWCEM BIOWASH is recommended to prevent further growth of algae, fungus or moss.

##### FILLING THE CRACKS, HOLES & DENTS

For filling cracks upto 3mm, holes and dents use Snowcare Wall Putty or white cement and fine sand in the ratio 1:3. For exterior surfaces or substrates that are subjected to continuous seepage or dampness, kindly get the repairs done before the application of paint.



#### PAINT APPLICATION PROCESS

APPLICATION	RECOATING PERIOD
STEP 1 SANDING	Sand The Surface With Emery Paper 180 And Wipe Clean
STEP 2 SNOWCEM SPECIAL (CW) PRIMER BRUSH / ROLLER / SPRAY	4 - 6 hrs
STEP 3 SNOWCARE WALL PUTTY TROWEL	O/N (Apply 2 Coats)
STEP 4 SNOWCEM SPECIAL (CW) PRIMER BRUSH / ROLLER / SPRAY	4 - 6 hrs
STEP 5 APPLICATION OF TOPCOAT BRUSH / ROLLER / SPRAY	Apply emulsion coat over SNOWCEM SPECIAL (CW) PRIMER

Drying period is quoted for 25°C and 50% Relative Humidity; these may vary under different atmospheric conditions.

#### PRODUCT FEATURES

*Provides Excellent Adhesion To Top Coat Emulsion*

*Excellent Alkali Resistant Property*

*Improves Appearance Of Top Coat*

*Excellent Opacity & Whiteness*

*Prevents Peeling Off Of Top Coat Emulsions*

*Free From Heavy Metals Like Lead, Chromium*

#### COLOURS AVAILABLE

##### WHITE\*

Snowcem Special (CW) Primer is an undercoat.



#### MIXING RATIO

Dilute one litre of Snowcem Special (CW) Primer with 500 ml of clean potable water for concrete surfaces & 200 ml of clean potable water for wooden surfaces. Do not add any stainer/colorant to the Snowcem Special (CW) Primer. Don't over dilute Snowcem Special (CW) Primer.



#### COVERAGE

Varies according to the porosity and texture of the surface. Coverage for smooth surface with no suction: Approx 90-110 Sq. ft. per liter per coat.



#### AVAILABLE PACK SIZES

The pack sizes available for Snowcem Special (CW) Primer are 20 l, 10 l, 4 l and 1 l.





## SPECIAL (CW) PRIMER

### PRIMER FOR EXTERIOR

#### TECHNICAL DETAILS

<b>Nature</b>	Thixotropic
<b>Base</b>	Acrylic emulsion binder & other additives
<b>Colour</b>	White
<b>Finish</b>	Smooth & uniform finish
<b>Mode of application</b>	By brush, roller or spray
<b>Drying time</b>	Touch dry 30 min. hard dry 4 To 6 hours
<b>Recoating period</b>	4 to 6 hours
<b>Stability of thinned paint</b>	To be used Within 24 hours
<b>Shelf life</b>	3 years

#### HANDLING & STORAGE

Keep containers airtight during handling and storage to avoid loss of material. Store Snowcem Special (CW) Primer in a cool dry place and also protect it from extreme climatic conditions during storage, in transit and at site.

#### PRECAUTIONS

It is not advisable to use any waterproofing chemical as base coat, top coat or as an additive. Over dilution of Snowcem Special (CW) Primer may result in, poor hiding, poor bonding or flaking. Excessive brushing and stretching are also to be avoided. No thinner or universal stainer is to be used with Snowcem Special (CW) Primer .

#### SAFETY MEASURES

Kindly refer to the MSDS for Snowcem Special (CW) Primer which gives detailed information on safety measures while handling the paint, which is available on request.

Store the container with the lid tightly closed in an upright position, in a cool, dry place.  
Keep out of reach of children and away from eatables.

May be harmful if swallowed. In case of ingestion seek immediate medical attention. In case of skin contact immediately wash skin with soap and plenty of water. Get medical attention if irritation develops or persists.

Wear eye protection during application. In case of contact with eyes, rinse immediately with plenty of water and seek medical advice. Do not breathe vapour or spray. It is recommended to wear suitable nose pad during sanding and surface preparation to avoid dust inhalation.

Do not pour leftover paint down the drain or in water courses.

In the event of spills, contain spillage using sand or earth.

#### POST PAINTING CARE

Apply 2 Coats of emulsion paint coat over SNOWCEM SPECIAL (CW) PRIMER

#### GREEN BUILDING PARAMETERS

**SPECIAL (CW) PRIMER** qualifies for "GREEN BUILDING CRITERIA"

##### REFERENCE

Type of Paint	LEEDS*	TERI GRIHA <sup>#</sup>
Exterior Flat	100 g/l VOC	100 g/l VOC
Interior Flat	50 g/l VOC	50 g/l VOC

As per IS 15489 : 2004, Section 6.12.2.1 specifies the "product not to contain more than 5%, by mass, Volatile Organic Compounds"

\* LEED - Leadership in Environment and Energy Design, USA.  
# TERI - The Energy and Resource Institute, India.  
GRIHA - Green Rating Integrated Habitat Assessment.

#### VOLATILE ORGANIC COMPOUNDS

**Snowcem Special (CW) Primer** contains less than 40 g/l VOC. **Snowcem Special (CW) Primer** contains 1-3% VOC.



#### HEAVY METALS

**Snowcem Special (CW) Primer** is free from lead, chromium (VI), cadmium, mercury and its compounds.



#### HAZARDOUS CHEMICALS

**Snowcem Special (CW) Primer** does not contain harmful compounds like formaldehyde, phenolic compounds, benzene, etc.





## UNIVERSAL PRIMER FOR EXTERIOR / INTERIOR

### PRODUCT DESCRIPTION

Universal Primer is a water-based wall coating suitable for exterior emulsions as well as interior emulsions. It is based on Acrylic Co-Polymer Emulsions.

### SURFACE PREPARATION

#### PLASTER

New masonry surfaces must be allowed to cure completely. It is recommended to allow 28 days as the curing time for new masonry surfaces.

#### CLEANING

Ensure the surface is completely free from all dirt, loosely held plaster, powdery residue, oil grease or any other contamination. Any previous growth of fungus, algae or moss needs to be removed thoroughly by vigorous wire brushing and cleaning with water. One Coat of SNOWCEM BIOWASH is recommended to prevent further growth of algae, fungus or moss.

#### FILLING THE CRACKS, HOLES & DENTS

For filling cracks upto 3mm, holes and dents use Snowcare Wall Putty or white cement and fine sand in the ratio 1:3. For exterior surfaces or substrates that are subjected to continuous seepage or dampness, kindly get the repairs done before the application of paints.



### PAINT APPLICATION PROCESS

APPLICATION	RECOATING PERIOD
STEP 1 SANDING	Sand The Surface With Emery Paper 180 And Wipe Clean
STEP 2 SNOWCEM UNIVERSAL PRIMER BRUSH / ROLLER / SPRAY	4 - 6 hrs
STEP 3 SNOWCARE WALL PUTTY TROWEL	O/N (Apply 2 Coats)
STEP 4 SNOWCEM UNIVERSAL PRIMER BRUSH / ROLLER / SPRAY	4 - 6 hrs
STEP 5 APPLICATION OF TOPCOAT BRUSH / ROLLER / SPRAY	Apply emulsion coat over SNOWCEM UNIVERSAL PRIMER

Drying period is quoted for 25°C and 50% Relative Humidity; these may vary under different atmospheric conditions.

### PRODUCT FEATURES

*Improves Appearance Of Top Coat*

*Excellent Opacity & Whiteness*

*Prevents Peeling Off Of Top Coat Emulsions*

*Fast Drying & Quick Recoatable*

*Provides Excellent Adhesion To Top Coat Emulsion*

*Free From Heavy Metals Like Lead, Chromium*

### COLOURS AVAILABLE

#### WHITE\*

Snowcem Universal Primer is an undercoat.



### MIXING RATIO

Dilute one litre of **Snowcem Universal Primer** with 1 liter of clean potable water. Do not add any stainer/colorant to the Snowcem Universal Primer. Don't over dilute **Snowcem Universal Primer**.



### COVERAGE

Varies according to the porosity and texture of the surface. Coverage for smooth surface with no suction: Approx 100-120 Sq. ft. per liter per coat.



### AVAILABLE PACK SIZES

The pack sizes available for **UNIVERSAL PRIMER** are 20 l, 10 l, 4 l and 1 l.





## UNIVERSAL PRIMER FOR EXTERIOR / INTERIOR

### TECHNICAL DETAILS

<b>Nature</b>	Thixotropic
<b>Base</b>	Acrylic emulsion binder & other additives
<b>Colour</b>	White
<b>Finish</b>	Smooth & uniform finish
<b>Mode of application</b>	By brush, roller or spray
<b>Drying time</b>	Touch dry 30 min. hard dry 4 To 6 hours
<b>Recoating period</b>	4 to 6 hours
<b>Stability of thinned paint</b>	To be used within 24 hours
<b>Shelf life</b>	3 years

### HANDLING & STORAGE

Keep containers airtight during handling and storage to avoid loss of material. Store Snowcem Universal Primer in a cool dry place and also protect it from extreme climatic conditions during storage, in transit and at site.

### PRECAUTIONS

It is not advisable to use any waterproofing chemical as base coat, top coat or as an additive. Over dilution of Universal Primer may result in poor hiding, poor bonding or flaking, Excessive brushing and stretching are also to be avoided. No thinner or universal stainer is to be used with Universal Primer.

### SAFETY MEASURES

Kindly refer to the MSDS for Snowcem Universal Primer which gives detailed information on safety measures while handling the paint, which is available on request.

Store the container with the lid tightly closed in an upright position, in a cool, dry place.  
Keep out of reach of children and away from eatables.

May be harmful if swallowed. In case of ingestion, seek immediate medical attention. In case of skin contact immediately wash skin with soap and plenty of water. Get medical attention if irritation develops or persists.

Wear eye protection during application. In case of contact with eyes, rinse immediately with plenty of water and seek medical advice. Do not breathe vapour or spray. It is recommended to wear suitable nose pad during sanding and surface preparation to avoid dust inhalation.

Do not pour leftover paint down the drain or in water courses.

In the event of spills, contain spillage using sand or earth.

### POST PAINTING CARE

**Apply 2 coats of emulsion paint coat over SNOWCEM UNIVERSAL PRIMER.**

### GREEN BUILDING PARAMETERS

**UNIVERSAL PRIMER  
qualifies for  
"GREEN BUILDING CRITERIA"**

#### REFERENCE

Type of Paint	LEEDS*	TERI GRIHA*
Exterior Flat	100 g/l VOC	100 g/l VOC
Interior Flat	50 g/l VOC	50 g/l VOC

As per IS 15489 : 2004, Section 6.12.2.1 specifies the "product not to contain more than 5%, by mass, Volatile Organic Compounds"

\* LEED - Leadership in Environment and Energy Design, USA.  
# TERI - The Energy and Resource Institute, India.  
GRIHA - Green Rating Integrated Habitat Assessment.

#### VOLATILE ORGANIC COMPOUNDS

**UNIVERSAL PRIMER** contains less than 40 g/l VOC. **UNIVERSAL PRIMER** contains 1-3% VOC.



#### HEAVY METALS

**UNIVERSAL PRIMER** is free from lead, chromium (VI), cadmium, mercury and its compounds.



#### HAZARDOUS CHEMICALS

**UNIVERSAL PRIMER** does not contain harmful compounds like formaldehyde, phenolic compounds, benzene, etc.





## SNOWPEARL INTERIOR PRIMER

### PRODUCT DESCRIPTION

Snowpearl Interior Primer is specially formulated & based on acrylic co-polymer & It can be used in interior only as priming coat for both new & old surfaces of plaster before application of finish coat.

### SURFACE PREPARATION

#### PLASTER

New masonry surfaces must be allowed to cure completely. It is recommended to allow 28 days as the curing time for new masonry surfaces.

#### CLEANING

Ensure the surface is completely free from all dirt, loosely held plaster, powdery residue, oil grease or any other contamination. Any previous growth of fungus, algae or moss needs to be removed thoroughly by vigorous wire brushing and cleaning with water.

#### FILLING THE CRACKS, HOLES & DENTS

For filling cracks upto 3mm, holes and dents use Snowcare Wall Putty or white cement and fine sand in the ratio 1:3 For Interior surfaces or substrates that are subjected to continuous seepage or dampness, kindly get the repairs done before the application of paint.



### PAINT APPLICATION PROCESS

APPLICATION	RECOATING PERIOD
STEP 1 SANDING	Sand The Surface With Emery Paper 180 And Wipe Clean
STEP 2 SNOWPEARL INTERIOR PRIMER BRUSH / ROLLER / SPRAY	4 - 6 hrs
STEP 3 SNOWCARE WALL PUTTY TROWEL	O/N (Apply 2 Coats)
STEP 4 SNOWPEARL INTERIOR PRIMER BRUSH / ROLLER / SPRAY	4 - 6 hrs
STEP 5 APPLICATION OF TOPCOAT BRUSH / ROLLER / SPRAY	Apply emulsion coat over SNOWCEM INTERIOR PRIMER

Drying period is quoted for 25°C and 50% Relative Humidity, these may vary under different atmospheric conditions.

### PRODUCT FEATURES

**Alkali Resistance**

**Easy Brushing & Excellent Covering**

**Quick Drying And Good Sealing Properties**

**Excellent Opacity & Whiteness**

**Free From Heavy Metals Like Lead, Chromium**

### COLOURS AVAILABLE

**WHITE\***

Snowpearl Interior Primer is an undercoat.



### MIXING RATIO

Dilute one litre of Snowpearl Interior Primer with 500 ml of clean potable water. Do not add any stainer/ colorant to the Snowpearl Interior Primer. Don't over dilute Snowpearl Interior Primer.



### COVERAGE

Varies according to the porosity and texture of the surface. Coverage for smooth surface with no suction: Approx 150-170 Sq. ft. per liter per coat.



### AVAILABLE PACK SIZES

The pack sizes available for Snowpearl Interior Primer are 20ℓ, 10ℓ, 4ℓ, and 1ℓ.





## SNOWPEARL INTERIOR PRIMER

### TECHNICAL DETAILS

<b>Nature</b>	Thixotropic
<b>Base</b>	Acrylic emulsion binder
<b>Colour</b>	White
<b>Finish</b>	Smooth & uniform finish
<b>Mode of application</b>	By brush, roller or spray
<b>Drying time</b>	Touch dry 20 min. hard dry 4 To 6 hours
<b>Recoating period</b>	4 to 6 hours
<b>Stability of thinned paint</b>	To be used within 24 hours
<b>Shelf life</b>	3 years

### HANDLING & STORAGE

Keep containers airtight during handling and storage to avoid loss of material. Store Snowpearl Interior Primer in a cool dry place and also protect it from extreme climatic conditions during storage, in transit and at site.

### PRECAUTIONS

It is not advisable to use any waterproofing chemical as base coat, top coat or as an additive. Over dilution of Snowpearl Interior Primer may result in poor hiding, poor bonding or flaking, Excessive brushing and stretching are also to be avoided. No thinner or universal stainer is to be used with Snowpearl Interior Primer.

### SAFETY MEASURES

Kindly refer to the MSDS for Snowpearl Interior Primer which gives detailed information on safety measures while handling the paint, which is available on request.

Store the container with the lid tightly closed in an upright position, in a cool, dry place.  
Keep out of reach of children and away from eatables.

May be harmful if swallowed. In case of ingestion, seek immediate medical attention. In case of skin contact immediately wash skin with soap and plenty of water. Get medical attention if irritation develops or persists.

Wear eye protection during application. In case of contact with eyes, rinse immediately with plenty of water and seek medical advice. Do not breathe vapour or spray. It is recommended to wear suitable nose pad during sanding and surface preparation to avoid dust inhalation.

Do not pour leftover paint down the drain or in water courses.

In the event of spills, contain spillage using sand or earth.

### POST PAINTING CARE

Apply 2 coats of emulsion paint coat over SNOWPEARL INTERIOR PRIMER.

### GREEN BUILDING PARAMETERS

**SNOWPEARL INTERIOR PRIMER**  
qualifies for  
"GREEN BUILDING CRITERIA"

#### REFERENCE

Type of Paint	LEEDS*	TERI GRIHA*
Exterior Flat	100 g/l VOC	100 g/l VOC
Interior Flat	50 g/l VOC	50 g/l VOC

As per IS 15489 : 2004, Section 6.12.2.1 specifies the "product not to contain more than 5%, by mass, Volatile Organic Compounds"

\* LEED - Leadership in Environment and Energy Design, USA.  
# TERI - The Energy and Resource Institute, India.  
GRIHA - Green Rating Integrated Habitat Assessment.

#### VOLATILE ORGANIC COMPOUNDS

**Snowpearl Interior Primer** contains less than 40 g/l VOC. **Snowpearl Interior Primer** contains 1-3% VOC.



#### HEAVY METALS

**Snowpearl Interior Primer** is free from lead, chromium (VI), cadmium, mercury and its compounds.



#### HAZARDOUS CHEMICALS

**Snowpearl Interior Primer** does not contain harmful compounds like formaldehyde, phenolic compounds, benzene, etc.





## SNOWCEM PRIMER FOR EXTERIOR / INTERIOR

### PRODUCT DESCRIPTION

SNOWCEM EXT/INT PRIMER is a water-based wall coating suitable application on exterior & interior surfaces as an undercoat to exterior & interior emulsions.

### SURFACE PREPARATION

#### PLASTER

New masonry surfaces must be allowed to cure completely. It is recommended to allow 28 days as the curing time for new masonry surfaces.

#### CLEANING

Ensure the surface is completely free from all dirt, loosely held plaster, powdery residue, oil grease or any other contamination. Any previous growth of fungus, algae or moss needs to be removed thoroughly by vigorous wire brushing and cleaning with water. One Coat of SNOWCEM BIOWASH is recommended to prevent further growth of algae, fungus or moss.

#### FILLING THE CRACKS, HOLES & DENTS

For filling cracks upto 3mm, holes and dents use Snowcare Wall Putty or white cement and fine sand in the ratio 1:3. For exterior surfaces or substrates that are subjected to continuous seepage or dampness, kindly get the repairs done before the application of paints.



### PAINT APPLICATION PROCESS

APPLICATION	RECOATING PERIOD
STEP 1 SANDING	Sand The Surface With Emery Paper 180 And Wipe Clean
STEP 2 SNOWCEM EXT/INT PRIMER BRUSH / ROLLER / SPRAY	4 - 6 hrs
STEP 3 SNOWCARE WALL PUTTY TROWEL	O/N (Apply 2 Coats)
STEP 4 SNOWCEM EXT/INT PRIMER BRUSH / ROLLER / SPRAY	4 - 6 hrs
STEP 5 APPLICATION OF TOPCOAT BRUSH / ROLLER / SPRAY	Apply emulsion coat over SNOWCEM EXT/INT PRIMER

Drying period is quoted for 25°C and 50% Relative Humidity; these may vary under different atmospheric conditions.

### PRODUCT FEATURES

*Improves Appearance Of Top Coat*

*Excellent Opacity & Whiteness*

*Prevents Peeling Off Of Top Coat Emulsions*

*Fast Drying & Quick Recoatable*

*Provides Excellent Adhesion To Top Coat Emulsion*

*Free From Heavy Metals Like Lead, Chromium*

### COLOURS AVAILABLE

#### WHITE\*

SNOWCEM EXT/INT PRIMER is an undercoat.



### MIXING RATIO

Dilute one litre of SNOWCEM EXT/INT PRIMER with 500 ml of clean potable water. Do not add any stainer/colorant to the SNOWCEM EXT/INT PRIMER. Don't over dilute SNOWCEM EXT/INT PRIMER.



### COVERAGE

Varies according to the porosity and texture of the surface. Coverage for smooth surface with no suction: Approx 120-140 Sq. ft. per liter per coat.



### AVAILABLE PACK SIZES

The pack sizes available for SNOWCEM EXT/INT PRIMER are 26ℓ, 20ℓ, 10ℓ, 4ℓ and 1ℓ.







## SNOWCEM PRIMER FOR EXTERIOR / INTERIOR

### TECHNICAL DETAILS

<b>Nature</b>	Thixotropic
<b>Base</b>	Acrylic emulsion binder & other additives
<b>Colour</b>	White
<b>Finish</b>	Smooth & uniform finish
<b>Mode of application</b>	By brush, roller or spray
<b>Drying time</b>	Touch dry 30 min. hard dry 4 To 6 hours
<b>Recoating period</b>	4 to 6 hours
<b>Stability of thinned paint</b>	To be used within 24 hours
<b>Shelf life</b>	3 year

### HANDLING & STORAGE

Keep containers airtight during handling and storage to avoid loss of material. Store SNOWCEM EXT/INT PRIMER in a cool dry place and also protect it from extreme climatic conditions during storage, in transit and at site.

### PRECAUTIONS

It is not advisable to use any waterproofing chemical as base coat, top coat or as an additive. Over dilution of SNOWCEM EXT/INT PRIMER may result in shade variation, poor hiding, poor bonding or flaking. Excessive brushing and stretching are also to be avoided. No thinner or universal stainer is to be used with SNOWCEM EXT/INT PRIMER .

### SAFETY MEASURES

Kindly refer to the MSDS for SNOWCEM EXT/INT PRIMER which gives detailed information on safety measures while handling the paint, which is available on request.

Store the container with the lid tightly closed in an upright position, in a cool, dry place.

Keep out of reach of children and away from eatables.

May be harmful if swallowed. In case of ingestion, seek immediate medical attention. In case of skin contact immediately wash skin with soap and plenty of water. Get medical attention if irritation develops or persists.

Wear eye protection during application. In case of contact with eyes, rinse immediately with plenty of water and seek medical advice. Do not breathe vapour or spray. It is recommended to wear suitable nose pad during sanding and surface preparation to avoid dust inhalation.

Do not pour leftover paint down the drain or in water courses.

In the event of spills, contain spillage using sand or earth.

### POST PAINTING CARE

Apply 2 coats of emulsion paint coat over SNOWCEM EXT/INT PRIMER.

### GREEN BUILDING PARAMETERS

SNOWCEM EXT/INT PRIMER  
qualifies for  
“GREEN BUILDING CRITERIA”

#### REFERENCE

Type of Paint	LEEDS*	TERI GRIHA*
Exterior Flat	100 g/l VOC	100 g/l VOC
Interior Flat	50 g/l VOC	50 g/l VOC

As per IS 15489 : 2004, Section 6.12.2.1 specifies the “product not to contain more than 5%, by mass, Volatile Organic Compounds”

\* LEED - Leadership in Environment and Energy Design, USA.  
# TERI - The Energy and Resource Institute, India.  
GRIHA - Green Rating Integrated Habitat Assessment.

#### VOLATILE ORGANIC COMPOUNDS

SNOWCEM EXT/INT PRIMER  
contains less than 40 g/l VOC.

SNOWCEM EXT/INT PRIMER  
contains 1-3% VOC.



#### HEAVY METALS

SNOWCEM EXT/INT PRIMER  
is free from lead, chromium  
(VI), cadmium, mercury and  
its compounds.



#### HAZARDOUS CHEMICALS

SNOWCEM EXT/INT PRIMER  
does not contain harmful  
compounds like  
formaldehyde, phenolic  
compounds, benz-ene, etc.





## Snowcare Protect

### WATER PROOFING EXTERIOR / INTERIOR BASECOAT

#### PRODUCT DESCRIPTION

**Snowcare Protect Basecoat** is an ultra durable exterior / interior emulsion basecoat specially formulated with pure acrylic latex for water proofing for exterior surfaces. It gives excellent dirt pick resistance for clean & durable elastomeric wall coating. Its unique surface cross linking feature coupled with organic-inorganic nano composite based architecture contribute to its outstanding mechanical & long lasting durability.

**Snowcare Protect Basecoat** also contains special additives to prevent algal, fungal and bacterial growth, UV degradation & elasticity and provides excellent alkali resistance.

#### SURFACE PREPARATION

##### PLASTER

New masonry surfaces must be allowed to cure completely. Recommended curing time is 28 days minimum.



##### CLEANING

Surface should be free from any loose paint, dust or grease. Growth of fungus, algae or moss should be removed by wire brushing and water.



##### FILLING THE CRACKS, HOLES & DENTS

For filling cracks upto 3mm, holes and dents use Snowcare Wall Putty or white cement and fine sand in the ratio 1:3

For exterior surfaces or substrates that are subjecte to continuous seepage or dampness, kindly get the repairs done before the paint application.



#### PAINT APPLICATION PROCESS

APPLICATION	RECOATING PERIOD
<b>STEP 1</b> <b>SNOWCARE PROTECT BASECOAT</b> <b>1st coat-30% dilution</b> BRUSH / ROLLER	4 hrs
<b>Step 2</b> <b>SNOWCARE PROTECT BASECOAT</b> <b>2nd coat without dilution</b> Brush/Roller	4 - 6 hrs
<b>Step 3</b> <b>Unigloss/ Pentasia/ Snowcryn</b> Brush/roller/spray	4 - 6 hrs for each coat.
Note <b>FOR REPAINTING SURFACE</b> <b>Snowcare Protect Basecoat</b> Brush/roller	<b>Apply one coat of</b> <b>Snowcare Protect</b> <b>Basecoat with</b> <b>no dilution</b>

1. Recoat period is quoted for 25°C and 50% Relative Humidity, these may vary under different atmospheric conditions.
2. Some shades may require 3 coats for proper hiding.

#### PRODUCT FEATURES

**Superb Water proofing**

**Superior cleanability**

**Elastomeric Coating**

**Structural protection**

**Exceptional UV Resistance**

**Anti Algal - Anti Fungal**

#### COLOURS AVAILABLE

**1500+\***

No shades available, it's a basecoat , Topcoat having more than 1500+ shades available as per Snowcem Paints Spectra.



#### MIXING RATIO

2 coat system -  
**SNOWCARE PROTECT BASECOAT**  
 (1 coat of 30% dilution + 1 coat of undiluted coat)



#### COVERAGE

Coverage is as follows:-  
 40 - 45 sq.ft per liter per coat.  
 1) 1st coat (30% dilution) 50-55 sq.ft per liter per coat.  
 2) 2nd coat ( without dilution) 25-30 sq.ft per liter per coat.  
 Actual coverage may vary according to the porosity and texture of the surface. For abundant precaution, an initial trial may be undertaken to determine covering capacity on very rough or abnormal surfaces.



#### AVAILABLE PACK SIZE

The pack size available for **SNOWCARE PROTECT BASECOAT** are 26 l and 20 l only.





## Snowcare Protect

### WATER PROOFING EXTERIOR / INTERIOR BASECOAT

#### TECHNICAL DETAILS

<b>Nature</b>	Thixotropic
<b>Base</b>	Basecoat has significantly higher elongation & unique fibres reinforcement thereby offering unique crack bridging ability to 2 mm.
<b>Finish</b>	Excellent smooth finish
<b>Drying time</b>	Surface dry time 30 minutes.
<b>Shelf life</b>	3 years

#### HANDLING & STORAGE

Keep containers airtight during handling and storage to avoid loss of material. Store Basecoat in a cool dry place and also protect it from extreme climatic conditions during storage, in transit and at site.

#### PRECAUTIONS

It is not advisable to use any waterproofing chemical as base coat, top coat or as an additive. Over dilution of basecoat may result in poor hiding, poor bonding or flaking. Excessive brushing and stretching are also to be avoided. No thinner or universal stainer is to be used with Snowcare Protect Basecoat.

#### SAFETY MEASURES

Kindly refer to the MSDS for Snowcare Protect Basecoat which gives detailed information on safety measures while handling the paint, which is available on request.

Store the container with the lid tightly closed in an upright position, in a cool, dry place.

Keep out of reach of children and away from eatables.

May be harmful if swallowed. In case of ingestion, seek immediate medical attention. In case of skin contact immediately wash skin with soap and plenty of water. Get medical attention if irritation develops or persists.

Wear eye protection during application. In case of contact with eyes, rinse immediately with plenty of water and seek medical advice. Do not breathe vapour or spray. It is recommended to wear suitable nose pad during sanding and surface preparation to avoid dust inhalation.

Do not pour leftover paint down the drain or in water courses.

In the event of spills, contain spillage using sand or earth.

#### GREEN BUILDING PARAMETERS

Basecoat qualifies for "GREEN BUILDING CRITERIA"

##### REFERENCE

Type of Paint	LEEDS*	TERI GRIHA*
Exterior Flat	100 g/l VOC	100 g/l VOC
Interior Flat	50 g/l VOC	50 g/l VOC

As per IS 15489 : 2004, Section 6.12.2.1 specifies the "product not to contain more than 5%, by mass, Volatile Organic Compounds"

\* LEED - Leadership in Environment and Energy Design, USA.  
# TERI - The Energy and Resource Institute, India.  
GRIHA - Green Rating Integrated Habitat Assessment.

#### VOLATILE ORGANIC COMPOUNDS

**Snowcare Protect Basecoat** contains less than 40 g/l VOC.  
**Snowcare Protect Basecoat** contains 1-3% VOC.



#### HEAVY METALS

**Snowcare Protect Basecoat** is free from lead, chromium (VI), cadmium, mercury and its compounds.



#### HAZARDOUS CHEMICALS

**Snowcare Protect Basecoat** does not contain harmful compounds like formaldehyde, phenolic compounds, benzene, etc.





## HARDCRETE

### CONCRETE HARDENING & WATERPROOFING LIQUID

#### PRODUCT DESCRIPTION

HARDCRETE implies hardening of concrete. The dual property of "HARDENING & WATERPROOFING" greatly enhance crushing strength as observed in 1 year old concrete which makes the product most suitable. HARDCRETE can use in mass concrete, cement renderings, floor toppings. Pits & basements can be proofed against a head of water with HARDCRETE. Wearing courses to floor are hardened densified and made dustless and resistant to many form of chemical attack encountered in tanneries, garages and other industrial premises.

HARDCRETE increases plasticity of concrete to provide workable mixes less than the normal amount of water. No deleterious effects are produced. On the contrary, greatly increased crushing strength is observed. Any desired acceleration of the setting time of cement can be obtained with HARDCRETE.

#### APPLICATION

- 1) Mass concrete- Mix 4 liters of HARDCRETE diluted with 4 liters of water for 100 kg of cement to get the required coverage.
- 2) Cement Renderings in Portland cement renderings HARDCRETE is used in the proportion of 4 liters to 100 kg of cement. If the sand is dry, dilute HARDCRETE with 5 liters of water. For thoroughly damp sand dilute HARDCRETE with 4 liters of water.
- 3) Interior Renderings- 1:2 mix of cement and clean gritty sand to a total thickness of not less than 19 mm (3/4") for 3 coat work is strongly advised, for proofing pits or basements. The purpose of 3-coat work is to minimize the risk of shrinkage crazing.

#### IMPORTANT PRECAUTION

No joint should be made in an angle. Those on the walls should be formed with a wide chamfered edge, at least 0.31 meter (1 feet) from a corner round which the rendering is continuously as a cover. Joints between wall and floor should be formed by either bringing the floor screed up the wall as a cover & skirting or by carrying the render coats outwards over the floor. Floors should be laid 26 mm (1") in a single thickness.

Exterior renderings- Here too the 1st coat should consist of mixed 1:2 and this is best thrown on the wall as a "Spatter dash" coating rather than trowelled. If laid on with a trowel, the mortar should be given the absolute minimum of working. Subsequent coats should be mixed 1:3 and a wood float used for finishing. The general principles involved are the same as those related to interior renderings i.e. 3 coats in preference to 2 coats, using sharp clean sand.

#### SPECIAL PRECAUTIONS

HARDCRETE is not suitable for use in aluminous cement, blast furnace cement or sulphate- resisting Portland cement. Not recommended in constructions where iron bars/rods are used.

#### PRODUCT FEATURES

**HARDCRETE Waterproofs & Hardens.**

**Greatly Increases Crushing Strength.**

**Accelerated Setting Time Of Cement.**

**Increases The Plasticity Of Concrete.**

**Free From Heavy Metals Like Lead, Chromium.**

#### MIXING RATIO

When used in standard proportion of 4 l with 100 kg. (2 bags) cement, HARDCRETE is required in approximately the following quantities:



1) Mass Concrete (HARDCRETE required in liter)			
MIX	1 Cubic Meter of Finished concrete	1 Cubic Yards of Finished concrete	
1:2:4	12	9	
1:1 1/2:3	16	11	
2) Renderings: 4L HARDCRETE diluted with 4 parts of water suffices for:			
Renderings Mix Aggregate Size 1/2"	Approx Sq. Meters	Yards Super	
1:2	7.25	9	
1:3:4	10.00	12	
3) Toppings: HARDCRETE diluted with 4 parts of water suffices for:			
Floor Topping Mixed	Approx Sq. Meters	Yards Super	Thickness (in mm)
2:5	6.70	8	26(1")
2:5	4.20	5	39(1 1/2")
1:1 1/2:3	3.35	4	78(3")

#### AVAILABLE PACK SIZES

HARDCRETE is available in 30 l & 5 l jerry cans, which are made of hard durable HDPE material which is non reactive with HARDCRETE but enhances the storage stability and also preserve it, making it reusable at intervals when needed. All our packing has Snowcem Paints Hologram, a mark of genuineness.





## HARDCRETE

### CONCRETE HARDENING & WATERPROOFING LIQUID

#### PRECAUTIONS

- Undercoats must be thoroughly scratched to provide a good key for subsequent work. A proper key must be provided for the 1st coat by the usual means, viz., close hacking of concrete raking out of the joints of the brick work etc., plus thorough washing & slurring. Slurry is made with a 1 part of HARDCRETE to 2 parts of water mixed with cement to creamy consistency.
- Floor toppings- It consists of cement either with Granite: aggregate should consist of 10 mm (3/8") material graded down to fines. Sand: really coarse and gritty washed sand with both aggregates, a mix of 2:5 is advised. 4 Liter of HARDCRETE must be used with 100-kg. of cement. This is roughly equivalent to gauging with a mixture of 1 part of HARDCRETE to 4 parts of water.
- **Floor topping should not be laid too wet or trowelled Under no circumstances, The following general direction should be followed**
  - I) Render the toppings smooth with a wood float and when the set commences, bring to smooth finish with a steel trowel. It is a bad practice to break the set of cement by wetting & troweling after too long an interval.
  - II) At proper consistency no water should rise to the face, if this occurs, it must not be sprinkled with neat cement.
  - III) Mature the topping wet, by keeping covered with wet sacks of sawdust, or by watering at intervals of 5 to 6 days.
  - IV) Where concrete is more than 3 days old, it is essential that the surface be close hacked or otherwise roughened. Thoroughly washed free of dust.
  - V) Undiluted HARDCRETE mixed with neat cement produces a hard set in 2 or 3 minutes where fast setting is required. Mortar mixed with HARDCRETE diluted with equal amount of water sets in about 10 minutes and must be used within that time.
  - VI) Floor repairs- 1 part of HARDCRETE with 2 parts of water normally provides sufficient acceleration, as is also the case when 4 liters of HARDCRETE is used per 100 kg of cement of concrete mixed stiff. The given figures can only be rough approximation, as the hardening time of cement is dependent upon the prevailing temperatures, the make and freshness of the cement, the amount of water used, the proportion of cement and the suction in the background. Thus HARDCRETE in quantity sufficient to half the setting time of concrete during the summer may only suffice to maintain ordinary setting time during cold weather. 1 or 2 trials are required under the actual conditions involved.

#### HANDLING & STORAGE

Keep containers airtight during handling and storage to avoid loss of material. Store HARDCRETE in a cool dry place and also protect it from extreme climatic conditions during storage, in transit and at site.

#### SAFETY MEASURES

Kindly refer to the MSDS for Snowcem HARDCRETE which gives detailed information on safety measures while handling the product, which is available on request.

Store the container with the lid tightly closed in an upright position, in a cool, dry place.

Keep out of reach of children and away from eatables.

May be harmful if swallowed. In case of ingestion, seek immediate medical attention. In case of skin contact immediately wash skin with soap and plenty of water. Get medical attention if irritation develops or persists.

Wear eye protection during application. In case of contact with eyes, rinse immediately with plenty of water and seek medical advice. Do not breathe vapour or spray. It is recommended to wear suitable nose pad during sanding and surface preparation to avoid dust inhalation.

In the event of spills, contain spillage using sand or earth.

#### GREEN BUILDING PARAMETERS

**HARDCRETE qualifies for "GREEN BUILDING CRITERIA"**

##### REFERENCE

Type of Paint	LEEDS*	TERI GRIHA#
Exterior Flat	100 g/l VOC	100 g/l VOC
Interior Flat	50 g/l VOC	50 g/l VOC

As per IS 15489 : 2004, Section 6.12.2.1 specifies the "product not to contain more than 5%, by mass, Volatile Organic Compounds"

\* LEED - Leadership in Environment and Energy Design, USA.  
# TERI - The Energy and Resource Institute, India.  
GRIHA - Green Rating Integrated Habitat Assessment.

#### VOLATILE ORGANIC COMPOUNDS

**Hardcrete** contains less than 40 g/l VOC.

**Hardcrete** contains 1-3% VOC.



#### HEAVY METALS

**Hardcrete** is free from lead, chromium (VI), cadmium, mercury and its compounds.



#### HAZARDOUS CHEMICALS

**Hardcrete** does not contain harmful compounds like formaldehyde, phenolic compounds, benzene, etc.





## SNOWCEM BIO-WASH

ANTI ALGAL/ ANTI - FUNGAL PRE TREATMENT WASH

### PRODUCT DESCRIPTION

SNOWCEM BIO-WASH is a water thinnable solution for treating the exterior surfaces. SNOWCEM BIO-WASH is to be used as a pre treatment wash for exterior surfaces to resist algal & fungal growth. SNOWCEM BIO-WASH contains anti algal/fungal agents, which inhibit algal & fungal growth.

### SURFACE PREPARATION

#### PLASTER

New masonry surfaces must be allowed to cure completely. Recommended curing time is 28 days minimum.



#### CLEANING

Surface must be clean and sound, free from all dust, oil, grease and other contaminations. Remove all loose material with scrapper or stiff wire brush. Dampness of the wall has to be treated with appropriate measures.



### PAINT APPLICATION PROCESS

APPLICATION	RECOATING PERIOD
STEP 1 SANDING	Sand the surface with sand paper 180 and wipe clean.
STEP 2 SNOWCEM BIOWASH -ANTI - ALGAL / ANTI - FUNGAL PRE TREATMENT WASH BRUSH/SPRAY	24 hrs
STEP 3 APPLICATION OF PRIMER AND EMULSION COAT BRUSH / ROLLER / SPRAY	Apply a coat of PRIMER followed by 2-3 coats of emulsion.

Drying period is quoted for 25°C and 50% Relative Humidity, these may vary under different atmospheric conditions.

### PRODUCT FEATURES

*Easily Diluted With Water*

*Fast Drying & Easy Application*

*Fungi-Algae Resistant*

*Free From Heavy Metals Like Lead, Chromium*

#### MIXING RATIO

Dilute one litre of SNOWCEM BIO-WASH with 4ℓ of clean potable water(1:4) and stir well. Don't over dilute SNOWCEM BIO-WASH.



#### COVERAGE

Varies according to the porosity and texture of the surface. Coverage for smooth surface with no suction:

Approx 900-950 Sq ft. Per liter per Coat.



#### AVAILABLE PACK SIZES

The pack sizes available for SNOWCEM BIO-WASH is available in 30 ℓ & 5 ℓ jerry cans. All our packing has Snowcem Paints Hologram, a mark of genuineness.





## SNOWCEM BIO-WASH

ANTI ALGAL/ ANTI - FUNGAL PRE TREATMENT WASH

### TECHNICAL DETAILS

<b>Nature</b>	Clear liquid
<b>Base</b>	Water
<b>Colour</b>	Slightly reddish
<b>Finish</b>	Consistent.
<b>Mode of application</b>	By brush preferably or by spray gun.
<b>Drying time</b>	Approx 1 hour depending on climatic condition.
<b>Waiting after treatment</b>	24 hours.
<b>Shelf Life</b>	3 Years from date of manufacture in original tightly closed containers away from direct sunlight & excessive heat.

### HANDLING & STORAGE

Keep containers airtight during handling and storage to avoid loss of material. Store SNOWCEM BIO-WASH in a cool dry place and also protect it from extreme climatic conditions during storage, in transit and at site.

### SAFETY MEASURES

Kindly refer to the MSDS for Snowcem Paints SNOWCEM BIO-WASH which gives detailed information on safety measures while handling the material, which is available on request.

Store the container with the lid tightly closed in an upright position, in a cool, dry place.  
Keep out of reach of children and away from eatables.

May be harmful if swallowed. In case of ingestion, seek immediate medical attention. In case of skin contact immediately wash skin with soap and plenty of water. Get medical attention if irritation develops or persists.

Wear eye protection during application. In case of contact with eyes, rinse immediately with plenty of water and seek medical advice. Do not breathe vapour or spray. It is recommended to wear suitable nose pad during sanding and surface preparation to avoid dust inhalation.

In the event of spills, contain spillage using sand or earth.

### POST PAINTING CARE

Apply a coat of PRIMER followed by 2-3 coats of emulsion Paint.

### GREEN BUILDING PARAMETERS

SNOWCEM BIO-WASH qualifies for "GREEN BUILDING CRITERIA"

#### REFERENCE

Type of Paint	LEEDS*	TERI GRIHA#
Exterior Flat	100 g/l VOC	100 g/l VOC
Interior Flat	50 g/l VOC	50 g/l VOC

As per IS 15489 : 2004, Section 6.12.2.1 specifies the "product not to contain more than 5%, by mass, Volatile Organic Compounds"

\* LEED - Leadership in Environment and Energy Design, USA.  
# TERI - The Energy and Resource Institute, India.  
GRIHA - Green Rating Integrated Habitat Assessment.

### VOLATILE ORGANIC COMPOUNDS

SNOWCEM BIO-WASH contains less than 40 g/l VOC.  
SNOWCEM BIO-WASH 1-3% VOC.



### HEAVY METALS

SNOWCEM BIO-WASH is free from lead, chromium (VI), cadmium, mercury and its compounds.



### HAZARDOUS CHEMICALS

SNOWCEM BIO-WASH does not contain harmful compounds like formaldehyde, phenolic compounds, benzene, etc.





## IMPERMO

CEMENT WATERPROOFING COMPOUND (POWDER & LIQUID)

### PRODUCT DESCRIPTION

IMPERMO is a water repellent product not containing calcium chloride. Available in powder form for adding to cement and in liquid form for adding to cement sand rendering, to overcome capillary absorption of moisture into cement mortar and concrete. IMPERMO has all the essential properties to waterproof concrete/sand cement rendering. Most economical as the quantity needed is just 2% powder or 0.4% liquid of the cement used.

### USAGE OF IMPERMO

IMPERMO a product for practical use under ordinary conditions of building construction.

- Tank, roofs, reservoirs, cast stone, basement walls, swimming pools.
- Inspection pits, sewage works, floors, conduits, renderings particularly backing coats of white or colored cement finishes; pools, cellars, garages, pits, walls.

### OTHER ADVANTAGES

- **IMPERMO Mixed Sand/Cement Rendering** to prevent dampness: A 3 coat rendering should be adopted, each coat being approx. 9.5 mm thick. The proportions recommended are 2<sup>1/2</sup> to 3 parts clean, well-graded sand to 1 part cement mixed with IMPERMO waterproofing compound. For slight seepage through walls it is possible to locate the pressure by inserting the pipes at position where the seepage is more as a definite outlet for water at the time of plastering. The pipes may after words be plugged with a soft wooden plug and plastered over an IMPERMO waterproofed cement mortar.
- **Curing Damp Walls:** It is almost impossible to guarantee a complete cure in cases whether the damp course has disintegrated. However, the following is the suggestion for treating damp walls in existing building in which there are no damp courses. A room may be made dry by stripping all old plaster from the inside walls about 750 mm. High and rendering the wall with 2 coats in waterproofed cement and sand in the proportion of 1 part cement to 2<sup>1/2</sup> part sand (use IMPERMO powder 2 % or liquid 0.4 % of cement). This should be applied in 2 coats, each 9.5 mm thick, the 1<sup>st</sup> coat being well scratched to provide a good mechanical key, which is most essential, and allowed to harden for 30 hours before applying the 2<sup>nd</sup> coat. Further precautions should be taken to keep the base of the wall as dry as possible by concreting the ground at least 600 mm. Wide all around the building and making arrangements to drain away surface water from this area.
- **Watertight Joints:** A watertight joint can be obtained by 'tongueing' the concrete, which is particularly desirable at the junction between floors and walls. The width of this groove should be about 1/3 of the concrete.
- **IMPERMO as base coat for coloured renderings:** is of particular value in producing water repellent backing on which to apply coloured cement rendering. It is essential for such backing to be non-absorbent; otherwise there may be considerable variations in the coloured and texture of the finishing coat, due to uneven suction.

### MIXING RATIO

Add only 1 kg of IMPERMO powder to every 50 kg of cement or add 200 ml of IMPERMO liquid to every 50 kg of cement mixed rendering. IMPERMO Integral Cement Waterproofing Compound



(Powder) should be mixed thoroughly with the cement before the cement is mixed with aggregate. IMPERMO liquid should be thoroughly mixed with cement /sand rendering. The 2 materials should be heaped on a mixing board thoroughly turned over several times with a shovel to ensure maximum dispersion of IMPERMO throughout the cement. The use of IMPERMO is not designed to permit the disregard of any of the essential for producing good dense concrete.

**ECONOMICAL ADVANTAGE:** - is most economical, as the quantity required just 2% powder or 0.4% liquid.

Requirement of IMPERMO		
Cement (in kg)	Powder (in kg)	Liquid (in ml)
50	1	200
100	2	400
1000	20	4000
1 CU. Meter of concrete	Powder (in kg)	Liquid (in liter)
1:1:2 Mix	10.50	2.10
1:1 <sup>1/2</sup> :3 Mix	8.00	1.60
1:2:4 Mix	6.20	1.25

**Note:** - 1 sq. meter of rendering 12.5 mm thick 1:3 mix requires 0.15 kg of IMPERMO Powder or 30 ml of IMPERMO Liquid.

### AVAILABLE PACK SIZES

IMPERMO in powder form is available in 01 kg poly pouches (25 nos. in a corrugated box), 5 kg & 20 kg multiwalled sacks. In liquid form, is available in 200 ml plastic bottles (25 X 200 ml in a corrugated box), 5 liter (6x5 liter in a corrugated box) and 30 liter. in jerry cans. All our packing has Snowcem Paints Hologram, a mark of genuineness.







# IMPERMO

CEMENT WATERPROOFING COMPOUND (POWDER & LIQUID)

## SURFACE PREPARATION

Before rendering, the surface should be thoroughly cleaned and all the joints raked out to provide a good key. Before application of the backing coat the wall must be soaked with water and the 1<sup>st</sup> coat applied when there is slight amount of moisture left on the surface \*2 coat work: where the surface is reasonably even, and is in no place more than 9.5 mm out of alignment, 2 coat work may be applied \*3 coat work: Where the surface is very rough or uneven, 3-coat work should be carried out, the 1<sup>st</sup> coat being applied to tune up the surface. This coat should consist of 3 parts sharp washed sand to 1 part of cement to which IMPERMO has been added, applied not less than 9.5 mm thick. This coat should be ruled off and combed with wavy horizontal lines to form a good key for the 2<sup>nd</sup> coat. The lines should be about 12.5 mm apart and not less than 3 mm deep. Where 3-coat work is employed, 48 hours should elapse between the application of the base coat and the 2<sup>nd</sup> coat. Finish coat: The finishing coat of not less than 3 mm should be composed of 2 to 3 part clean, well graded and suitably coloured sand to 1 part of white, coloured or ordinary cement. Curing: When the finished coat has hardened off. Care should be taken to keep the surface moist in dry weather. The usual precautions should be taken to see that all coats are properly protected from the effect of adverse weather conditions.

Materials to be used for watertight concrete works:

Cement: Portland cement should confirm to the Indian/British or other approved standard specification for Portland cement. 2% IMPERMO powder or 0.4% IMPERMO liquid should be added.

Water: Clean potable water should be used. The water in the aggregate should not exceed.

Normal Mix	Water/Cement ratio by wt.	liter per bag of cement
1:1:2	0.43	21.59
1:1 <sup>1</sup> / <sub>2</sub> :3	0.51	26.14
1:2:4	0.58	29.55

Aggregates should be inert clean, hard, strong, durable non-porous and well graded. The particles should not be coated with clay or dirt since these prevent proper bonding of the paste and increases porosity.

## IMPORTANT PRECAUTIONS

Under no circumstances, quantity to be added should exceed more than 1 kg of powder or 200 ml of liquid to ever 50 kg of cement. It is intended for practical use under ordinary conditions of building construction. Will not serve any useful purpose unless it is mixes thoroughly.

## HANDLING & STORAGE

Keep Sacks/containers airtight during handling and storage to avoid loss of material. Store IMPERMO in a cool dry place and also protect it from extreme climatic conditions during storage, in transit and at site.

## SAFETY MEASURES

Kindly refer to the MSDS for IMPERMO which gives detailed information on safety measures while handling the product, which is available on request.

Store the container with the lid tightly closed in an upright position, in a cool, dry place.

Keep out of reach of children and away from eatables.

May be harmful if swallowed. In case of ingestion, seek immediate medical attention. In case of skin contact immediately wash skin with soap and plenty of water. Get medical attention if irritation develops or persists.

Wear eye protection during application. In case of contact with eyes, rinse immediately with plenty of water and seek medical advice. Do not breathe vapour or spray. It is recommended to wear suitable nose pad during sanding and surface preparation to avoid dust inhalation.

In the event of spills, contain spillage using sand or earth.

## GREEN BUILDING PARAMETERS

IMPERMO qualifies for "GREEN BUILDING CRITERIA"

### REFERENCE

Type of Paint	LEEDS*	TERI GRIHA*
Exterior Flat	100 g/l VOC	100 g/l VOC
Interior Flat	50 g/l VOC	50 g/l VOC

As per IS 15489 : 2004, Section 6.12.2.1 specifies the "product not to contain more than 5%, by mass, Volatile Organic Compounds"

\* LEED - Leadership in Environment and Energy Design, USA.  
# TERI - The Energy and Resource Institute, India.  
GRIHA - Green Rating Integrated Habitat Assessment.

## VOLATILE ORGANIC COMPOUNDS

IMPWEMO contains less than 40 g/l VOC

IMPWEMO contains 1-3% VOC.



## HEAVY METALS

IMPWEMO is free from lead, chromium (VI), cadmium, mercury and its compounds.



## HAZARDOUS CHEMICALS

IMPWEMO does not contain harmful compounds like formaldehyde, phenolic compounds, benzene, etc.





## CEMPROVER

CEMENT PRIMER FOR CEMENT PAINT

### PRODUCT DESCRIPTION

CEMPROVER Cement Primer is a liquid for use as a primer for cement paints application such as Snowcem plus, cemcolour & Super Snowcem. CEMPROVER Cement Primer is a primer for cemcolour cement paint improves adhesion properties for certain difficult wall surfaces. Provides a key for plastering to untreated concrete and smooth faced bricks.

### SURFACE PREPARATION

#### PLASTER

New masonry surfaces must be allowed to cure completely. Recommended curing time is 28 days minimum.



#### CLEANING

Surface must be clean and sound, free from all dust, oil, grease and other contaminations. Remove all loose material with scrapper or stiff wire brush. Dampness of the wall has to be treated with appropriate measures. Stains must be removed by cleaning with a suitable detergent. However, CEMPROVER is mainly recommended which need extra care for surface preparation.



1. Bricks with sulphate: - Certain types of ordinary clay bricks contain harmful quantities of sulphates and Snowcem Plus applied directly over it would eventually flake off. Hence before application of CEMPROVER it is essential to ensure that the walls be dry at the time of application. New brick work must be thoroughly dried out. Surface preparation should be carried out as given above.
2. Old surfaces bearing cement paint: - If the surface has become soiled or dusty as a result of weathering or atmospheric pollution, it should be dry brushed to remove as much dirt and dust as possible.
3. Distemper & Lime wash:-It is essential to remove the existing distemper (oil free) or lime wash coating and to exposure a sound baking. It is, however impossible to remove every trace from rough and textured surface but should ensure that the remaining residue is not loose, dusty or flaking. 01 coat of CEMPROVER scrubbed in, will usually permit normal 2 coats of SNOWCEM PLUS application thereafter.
4. Smooth/non absorbent cement surfaces:- On smooth surfaces such as insitu concrete when metal or hardboard from work has been used or where the cement surface is sound but has been heavily steel trowelled, there is no natural key for SNOWCEM PLUS and it will not adhere. Hence CEMPROVER priming is must before a normal coat of SNOWCEM PLUS or CEMCOLOUR or SUPER SNOWCEM.

Use of CEMPROVER is also recommended in extremely hot conditions before application of SNOWCEM PLUS OR CEMCOLOUR OR SUPER SNOWCEM

### PAINT APPLICATION PROCESS

APPLICATION	RECOATING PERIOD
STEP 1 SANDING	Sand the surface with sand paper 180 and wipe clean.
STEP 2 CEMPROVER CEMENT PRIMER BRUSH/SPRAY	6-8 hrs
STEP 3 APPLICATION OF CEMENT PAINTS BRUSH / ROLLER / SPRAY	Apply 2 coats of Cement Paints .

### PRODUCT FEATURES

*Easily Dilutable With Water.*

*Improves Adhesion Properties.*

*Improves The Water Repellency For Surfaces.*

*Non-Flammable.*

*Free From Heavy Metals Like Lead, Chromium.*

### MIXING RATIO

Usage as a Primer: Dilute one litre of CEMPROVER with 1 litre of clean potable water (1:1) and stir well. Don't over dilute CEMPROVER. Apply with brush. For spray application additional quantity of water may be required for dilution.



### COVERAGE

Varies according to the porosity and texture of the surface. Coverage for smooth surface with no suction:

Approx 35-45 Sq.ft. per liter Per coat.



### AVAILABLE PACK SIZES

The pack sizes available for CEMPROVER is available in 30ℓ & 5ℓ jerry cans. All our packing has Snowcem Paints Hologram, a mark of genuineness.





## CEMPROVER

CEMENT PRIMER FOR CEMENT PAINT

### TECHNICAL DETAILS

<b>Nature</b>	Liquid
<b>Base</b>	Milky White
<b>Mode of application</b>	By brush or spray
<b>Drying time</b>	6-8 hour depending on climatic condition
<b>Dilution Ratio</b>	1:1 Cemprover: clean water
<b>Shelf life</b>	3 years

#### Covering Capacity :-

Surfaces	Covering Capacity (sq.ft/ltr/coat)
Brick work	2.65 X 10
Cement /Sand rendering	12.50 X 10
Old Snowcem Plus/cement surfaces	12.50 X 10
Distemper /Lime wash	13.50 X 10
Cement/Sand rendering (Smooth Surface)	15.00 X 10

### HANDLING & STORAGE

Keep containers airtight during handling and storage to avoid loss of material. Store CEMPROVER in a cool dry place and also protect it from extreme climatic conditions during storage, in transit and at site.

### SAFETY MEASURES

Keep containers airtight during handling and storage to avoid loss of material. Store CEMPROVER in a cool dry place and also protect it from extreme climatic conditions during storage, in transit and at site.

#### SAFETY MEASURES

Kindly refer to the MSDS for Snowcem CEMPROVER which gives detailed information on safety measures while handling the product, which is available on request.

Store the container with the lid tightly closed in an upright position, in a cool, dry place.

Keep out of reach of children and away from eatables.

May be harmful if swallowed. In case of ingestion, seek immediate medical attention. In case of skin contact immediately wash skin with soap and plenty of water. Get medical attention if irritation develops or persists.

Wear eye protection during application. In case of contact with eyes, rinse immediately with plenty of water and seek medical advice. Do not breathe vapour or spray. It is recommended to wear suitable nose pad during sanding and surface preparation to avoid dust inhalation.

Do not pour leftover down the drain or in watercourses.

In the event of spills, contain spillage using sand or earth.

### POST PAINTING CARE

Apply 2 coats of SNOWCEM PLUS/CEMCOLOUR/SUPER SNOWCEM OVER THE CEMPROVER.

### GREEN BUILDING PARAMETERS

CEMPROVER qualifies for  
"GREEN BUILDING CRITERIA"

#### REFERENCE

Type of Paint	LEEDS*	TERI GRIHA#
Exterior Flat	100 g/l VOC	100 g/l VOC
Interior Flat	50 g/l VOC	50 g/l VOC

As per IS 15489 : 2004, Section 6.12.2.1 specifies the "product not to contain more than 5%, by mass, Volatile Organic Compounds"

\* LEED - Leadership in Environment and Energy Design, USA.  
# TERI - The Energy and Resource Institute, India.  
GRIHA - Green Rating Integrated Habitat Assessment.

### VOLATILE ORGANIC COMPOUNDS

CEMPROVER contains less than 40 g/l VOC.  
CEMPROVER contains 1-3% VOC.



### HEAVY METALS

CEMPROVER is free from lead, chromium (VI), cadmium, mercury and its compounds.



### HAZARDOUS CHEMICALS

CEMPROVER does not contain harmful compounds like formaldehyde, phenolic compounds, benzene, etc.





## SNOWSOL

### STABILISING SOLUTION

#### PRODUCT DESCRIPTION

SNOWSOL stabilizing solution consists of an organic resin in a hydrocarbon solvent. It is used as a priming coat for any Interior / Exterior surface where adhesion or efflorescence is an issue.

#### SURFACE PREPARATION

##### PLASTER

New masonry surfaces must be allowed to cure completely. Recommended curing time is 28 days minimum.



##### CLEANING

Surface must be cleaned and sound, free from all dust, oil, grease and other contaminations. Remove all loose material with scrapper or stiff wire brush. Dampness of the wall has to be treated with appropriate measures.



#### RECOMMENDED OF SNOWSOL

SNOWSOL is normally used as a single coat application to stabilize exterior & interior friable or chalking surfaces. It may also be applied as a primer to-

- Cement/lime/sand rendering
- Concrete & concrete block work
- Rough cast & pebble-dash
- Interior plastering & brick work
- Asbestos insulating boards & asbestos cement sheets
- Most type of emulsion paints, distemper etc.
- Strongly recommended as a primer for SANDTEX MATT, SNOWDECOR TEXTURE PAINTS, TRUMP & ALLROUNDER, SNOWCRYL, PENTASIA & UNIGLOSS.

#### PAINT APPLICATION PROCESS

APPLICATION	RECOATING PERIOD
STEP 1 <b>Surface Preparation</b>	Sand the surface with sand paper 180 and wipe clean.
STEP 2 <b>Snowsol</b>	8-12 Hours, depending upon climatic condition.
STEP 3 <b>Snowdecor texture , Sandtex Matt, Snowcryl, Trump &amp; AllRounder, Pentasia &amp; Unigloss. BRUSH / SPRAY</b>	Apply 2 coats of Snowdecore texture , Sandtex Matt, Snowcryl, Trump & All Rounder, Pentasia & Unigloss.

Drying period is quoted for 25°C and 50% Relative Humidity, these may vary under different atmospheric conditions.

#### PRODUCT FEATURES

*Ready to use*

*High penetrative qualities*

*Will control suction properly*

*Fungi-Algae Resistant*

*Free from Heavy Metals like lead, chromium & cadmium*

#### COLOURS AVAILABLE

Self color.  
Can be tinted if required.



#### MIXING RATIO

Ready to apply, requires no dilution.



#### COVERAGE

Varies according to the porosity and texture of the surface. Coverage for smooth surface with no suction:  
Approx 55-65 sq.ft per liter per coat.



#### AVAILABLE PACK SIZES

The pack sizes available for **SNOWSOL** are available in 30l & 5l jerry cans. All our packing has Snowcem Paints Hologram, a mark of genuineness.





## SNOWSOL

### STABILISING SOLUTION

#### TECHNICAL DETAILS

<b>Nature</b>	Liquid
<b>Colour</b>	Light Brown
<b>Mixing</b>	Ready to use, requires no dilution
<b>Mode of application</b>	By brush
<b>Drying Time</b>	8-12 hours, depending on climatic condition
<b>Shelf life</b>	3 years

#### HANDLING & STORAGE

Keep containers airtight during handling and storage to avoid loss of material. Store SNOWSOL in a cool dry place and also protect it from extreme climatic conditions during storage, in transit and at site

#### SAFETY MEASURES

Kindly refer to the MSDS for Snowcem Paints SNOWSOL which gives detailed information on safety measures while handling the paint, which is available on request.

Store the container with the lid tightly closed in an upright position, in a cool, dry place. Keep out of reach of children and away from eatables.

May be harmful if swallowed. In case of ingestion, seek immediate medical attention. In case of skin contact immediately wash skin with soap and plenty of water. Get medical attention if irritation develops or persists.

Wear eye protection during application. In case of contact with eyes, rinse immediately with plenty of water and seek medical advice. Do not breathe vapour or spray. It is recommended to wear suitable nose pad during sanding and surface preparation to avoid dust inhalation.

Do not pour leftover paint down the drain or in watercourses.

In the event of spills, contain spillage using sand or earth.

#### POSTPAINTING CARE

**Apply texture or top coats or both over SNOWSOL as per the customer choice.**

#### PRECAUTIONS

It is not advisable to use any waterproofing chemical as base, top coat or additive. Over dilution of SNOWSOL may result in poor bonding or flaking. Excessive brushing and stretching are also to be avoided. No thinner or universal stainer is to be used with SNOWSOL.

#### HEAVY METALS

SNOWSOL is free from lead, chromium (VI), cadmium, mercury and its compounds.



#### HAZARDOUS CHEMICALS

SNOWSOL does not contain harmful compounds like formaldehyde, phenolic compounds, benzene, etc.





## SNOWDECOR

### SCRATCH FINISH

#### SCOPE

Contains acrylic copolymer emulsion and reinforced with high quality marble powder & silica sand and its aggregates. It is formulated to withstand humidity, rain & hot climatic condition. It contains anti bacterial & anti fungal additives.

#### Texture finishes available-

- ONYX**- 2.0 mm scratch finish.
- CRYSTAL**- 1.0 mm scratch finish.
- QUARTZ**- 0.5 mm scratch finish.

#### AREAS OF APPLICATION

SNOWDECOR adheres perfectly to different external & internal surfaces, like plaster, masonry, brickwork, concrete, gypsum & asbestos. It is also reviving old surfaces.

#### SURFACE PREPARATION

##### PLASTER

New masonry surfaces must be allowed to cure completely. Recommended curing time is 28 days minimum.



##### CLEANING

Surface must be cleaned and sound, free from all dust, oil, grease and other contaminations. Remove all loose material with scrapper or stiff wire brush. Dampness of the wall has to be treated with appropriate measures.



#### APPLICATION PROCEDURE

Mix the paste properly. Add water if required. Apply by trowel.

#### PRECAUTIONS

Texture finish to be applied on a painted surface, a coat of SNOWSOL Stabilizing Solution is recommended. Texture finish should not be applied on wet surfaces. Avoid touch up work on texture finish, as faults could be visible. For better results, SNOWDECOR should be applied by skill labour only.

#### HANDLING & STORAGE

Keep containers/sacks airtight during handling and storage to avoid loss of material. Store **SNOWDECOR** in a cool dry place and also protect it from extreme climatic conditions during storage, in transit and at site.

#### POST PAINTING CARE

Apply 1 coat of Primer and 2 coats of exterior emulsion paint over texture finish.

#### DISCLAIMER

The information contained within this data sheet is based on information believed to be reliable at the time of its preparation. The company will not be liable for loss or damage howsoever caused including liability for negligence, which may be suffered by the user of the data contained herein. It is the users' responsibility to conduct all necessary tests to confirm the suitability of any product or system for their intended use. No guarantee of results is implied since conditions of use are beyond our control.

Colour	Base Colour
Finish	Textured Scratch Finish
Solids (%)	<b>ONYX:</b> 88 ± 2 <b>CRYSTAL:</b> 84 ± 2 <b>QUARTZ:</b> 83 ± 2
<b>Theoretical coverage</b> <b>ONYX 2mm</b>	
Sq.ft./kg/coat:	2.6 - 2.8
Recommended DFT:	2.0-2.2 mm
<b>CRYSTAL 1mm</b>	
Sq.ft./kg/coat:	2.6 - 3.6
Recommended DFT:	1.0-1.2 mm
<b>QUARTZ 0.5mm</b>	
Sq.ft./kg/coat:	3.3 - 4.0
Recommended DFT:	0.6 - 0.8 mm
<b>Shelf life:</b> 12 months in Drum & 6 months in Bag	
Mode Of Application	Trowel
Recommended System	One coat of scratch finish, one coat of primer and two coats of acrylic exterior paint

#### AVAILABLE PACK SIZES

Available in 30 kg sacks.

**All our packing has Snowcem Paints Hologram, a mark of genuineness.**

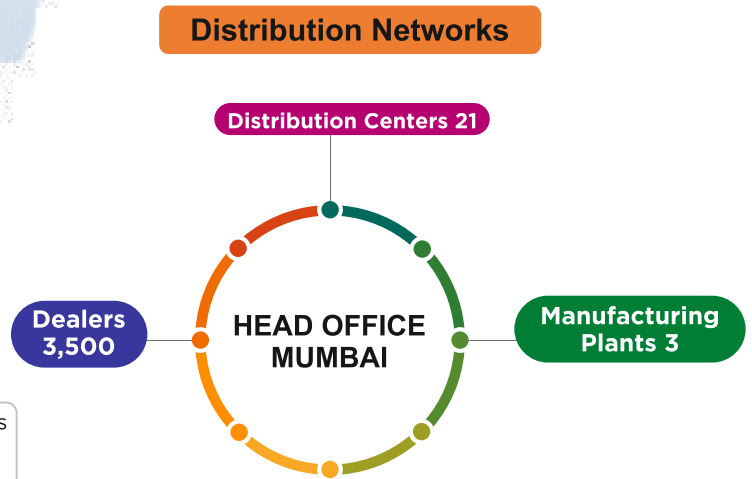
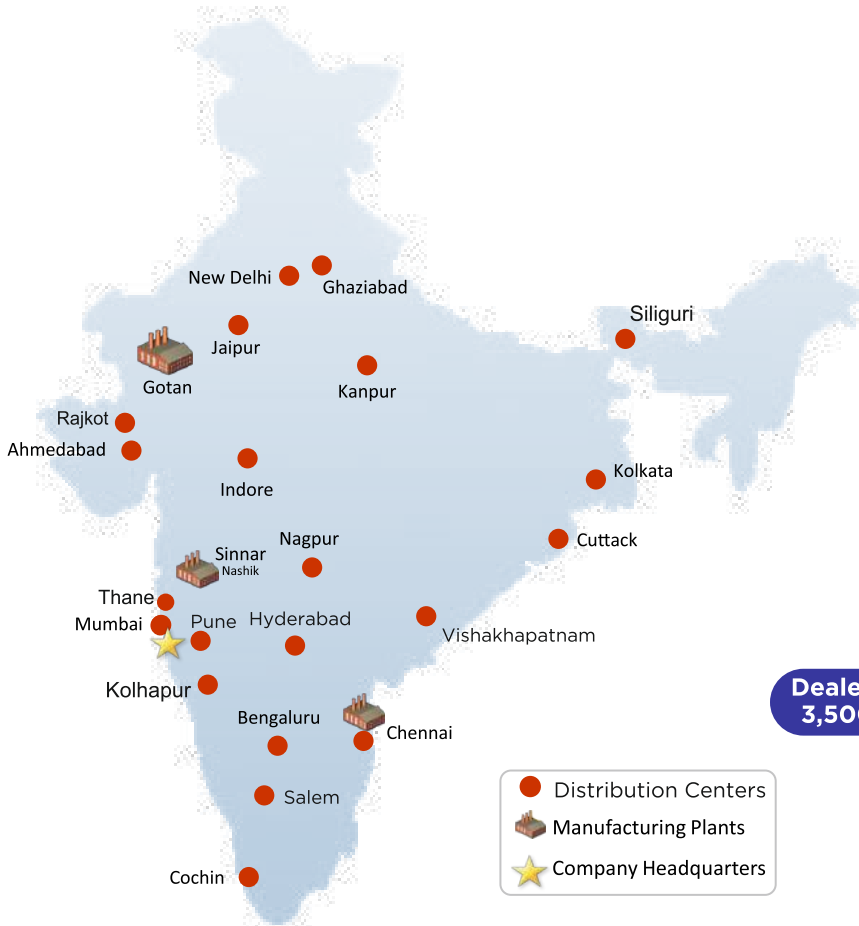


## Marquee Institutional Clientele Portfolio

 <p>Airports Authority of India</p>	 <p>एनटीपीसी NTPC</p>	 <p>KALPA-TARU®</p>	
 <p>TATA HOUSING</p>	 <p>Reliance Industries Limited</p>	 <p>RELIANCE</p>	
 <p>भारतीय डाक INDIA POST Ministry of Communications &amp; Information Technology India Post</p>	 <p>ओएनजीसी ONGC</p>	 <p>LIC भारतीय जीवन बीमा निगम LIFE INSURANCE CORPORATION OF INDIA</p>	
 <p>TAJ Hotels Resorts and Palaces</p>	 <p>MTNL</p>	 <p>महाडा MHADA</p>	
 <p>Gammon</p>	 <p>Municipal Corporation of Greater Mumbai</p>	 <p>INDIAN INSTITUTE OF TECHNOLOGY BOMBAY</p>	
 <p>इंडियनऑयल IndianOil</p>	 <p>जने प न्यास JNPT</p>	 <p>राष्ट्र की सेवा में परमाणु BARC ATOMS IN THE SERVICE OF THE NATION</p>	
 <p>बेस्ट</p>	 <p>सेंट्रल बैंक ऑफ इंडिया Central Bank of India</p>	 <p>BSNL Connecting India</p>	
 <p>भारतीय रिज़र्व बैंक STATE BANK OF INDIA</p>	 <p>MUMBAI PORT 1873</p>	 <p>HP</p>	

## Robust Distribution Network across the Country

Pan India Presence Across Multiple States



- Has adopted advanced inventory management model based on automatic replenishment of inventories
- Currently have Navision ERP model - also has been keeping the inventories at the threshold optimum levels for better inventory management

At **Saurashtra Cement Limited - Paint Division, Snowcem Paints**, we are environment friendly and believe in nurturing the ecosystem. Thus we thoroughly promote non-polluting water based paints. We care for the eco-system for which we have a highly advanced system for the treatment of factory effluents. Our main thought behind this is to leave the natural resources unharmed for our coming generation. Health & Safety of the employees, customers, environment and the planet is of top priority to us.



Lead, Mercury and Chromium Free Paints



Member of Indian Green Building Council



Economy to Ultra-luxurious Products



## Value Added Services



### “SEE IT BEFORE YOU PAINT IT”

Whatever dreams you have for your home in your mind can be brought to your computer screen and you can experiment with thousands of colours and combinations with this service.



Surveying of existing surfaces conditions & reports

Recommending the necessary specification and reports

Providing Color schemes as per elevation of the structure

Recommending authorized agencies for painting services

## Online Services



**KNOW YOUR COLOR**



**VISUALISER**



**BUDGET CALCULATOR**

Your trusted  
brand just got  
**a makeover.**



## DEPOTS

### AHMEDABAD

No. 15, Prime Estate - II,  
Near Jamnagar Transport Company,  
Sarkhej - Bavla Highway, Ahmedabad - 382210

### BENGALURU

1687, Basement Floor, Spr Nisarga Serenity,  
6th Cross, 1st Main, Beml Layout, Rajarajeshwari Nagar,  
Bengaluru (Bangalore) Urban, Karnataka - 560098

### CHENNAI

S.No. 81/3, Noombal Road, Velapanchavady,  
Chennai, Tamil Nadu - 600077

### CUTTACK

M/s. Verma Logistics Pvt., Verma Complex,  
Bhanpur, Gopalpur, Beside Rudra Hospital,  
Cuttack - 753011, Odisha

### GHAZIABAD

Plot No- 19, Khasra No- 74 MI IPS Industrial Compound  
Rasulpur Meerut Road, Morta, Ghaziabad - 201003

### HYDERABAD

Plot No. P9/11B, Road No. 6, Ida Nacharam,  
Meerpet Old Village, Block 1, Kapra Municipality,  
Uppal Mandal, Malkaggiri Medchal Dist, Near IDA Nacharam,  
Road No.7, Voith Turbo Pvt Ltd. Hyderabad - 500076

### INDORE

C/O Shree Paints, 253, 2<sup>nd</sup> Floor, Shastri Market,  
Indore, Madhya Pradesh - 452007

### JAIPUR

D-2, Sudarshan Pura Ind. Area, 22 Godam,  
Jaipur, Rajasthan - 302006

### KANPUR

07/1103, Bairi Akbarpur, Main Road Indira Nagar,  
Near Diviniti Apt. Gate 3, Kanpur Nagar,  
Uttar Pradesh - 208026

### KOLHAPUR

Techno Chem, RS No. 2726, Behind KMT Petrol Pump,  
Shiroli (P), Hatkangale, Kolhapur 416 115, Maharashtra

### KOCHI

Door No. C.C 69/754, (Old No. 43/51-A) Ground Floor,  
Ameer Complex, Facing Ayyappankavu East Road,  
Ayyappankave, Ernakulam North, Kerala - 682018

### KOLKATA

Near Dankuni Super Service Station,  
Old Delhi Road, Opp. Sriram Grand city,  
Manoharpur, Dankuni, Hooghly, West Bengal - 712311

### MUMBAI

Ansa Industrial Estate Gala No. J-18, Saki Vihar Road,  
Chandivali, Sakinaka Andheri East,  
Mumbai - 400072

### MUMBAI-THANE

GS Sales Corporation, R-1, Jai Matadi Compound,  
Kalher, Bhiwandi, Thane - 421302

### NAGPUR

Grace Logistics, House No. 22, Plot No.4,  
Survey No.65, Opposite Glasco Godown,  
Khadgaon Road, Mouza: Lawa, Wadi, Nagpur - 440023

### NEW DELHI

D-103, Ground Floor, Okhla Industrial Area,  
Phase I, Near City Union Bank, New Delhi - 110020

### PUNE

Rameshwar Warehouse SR No. 36/1/6  
Near Vitthal Mandir, Mantarwadi, Uruli Devachi,  
Pune - 412308

### RAJKOT

Gokul Trade Link, Vedvadi-3, Opp. Ilori Apartment,  
Opp. Mahavir Tea Stall, Near D-Mart, Gondal Road,  
Rajkot, Gujarat, 360004

### SALEM

M/S. Sterling Agency, Door no.499,  
Kathaiyammal Nagar, Maniyannur, Salem, Tamil Nadu

### SILIGURI

M.M.Traders, Hospital Road, Niranjana Nagar, Ghoghomali,  
Ward No.36, Siliguri - 734006




### VISHAKHAPATNAM

c/o Sampat Vinayakar Trading Co, 50-57-20/A,  
Sri Nagar, Nr. Reddy Hospital,  
Vishakhapatnam - 530016

For any queries please call us on our

Toll free number  : 1800-891-3541

**Corporate office:** 3rd Floor, Agrima Business Centre, N. K. Mehta International House,  
178, Backbay Reclamation, Babubhai Chinai Marg, Mumbai - 400 020. Maharashtra, India. **Tel.** +91-22-66365444/66365390

[www.snowcempaints.com](http://www.snowcempaints.com) | Follow us on     

**E-mail:** [customercare.scl@snowcempaints.com](mailto:customercare.scl@snowcempaints.com)



**Ecofriendly Commitment: No Added Lead, Chromium and Mercury in any Snowcem Products.**  
(Apart from \* marked)

# Snowcem

## P A I N T S

**Saurashtra Cement Limited** (Paint Division)

For any queries please call us on our

Toll free number  : 1800-891-3541

Website: [www.snowcempaints.com](http://www.snowcempaints.com)

Email: [customercare.scl@snowcempaints.com](mailto:customercare.scl@snowcempaints.com)



**Ecofriendly Commitment: All products of Snowcem  
Paints are Lead, Chromium and Mercury free**

**Corporate office:** 3rd Floor, Agrima Business Centre, N. K. Mehta International House,  
178, Backbay Reclamation, Babubhai Chinai Marg, Mumbai - 400 020. Maharashtra, India.  
**Tel.** +91-22-66365444/66365390

#### DEPOTS

Ahmedabad | Bengaluru | Chennai | Cuttack | Ghaziabad | Hyderabad | Indore | Jaipur | Kanpur | Kolhapur | Kochi | Kolkata  
Mumbai | Mumbai - Thane | Nagpur | New Delhi | Pune | Rajkot | Salem | Siliguri | Vishakhapatnam